

CHOICE GUIDE

SYSTEMS AND SOLUTIONS OF HYDRONIC DISTRIBUTION





heating system



traditional heating system



wood fuel



pellet fuel



DHW Domestic Hot Water



puffer



solar thermal system

INDEX

<u>MX135/1</u>	06
<u>MX115/1 Mini</u>	07
<u>MX120/1</u>	13
<u>MX135/1V</u>	15
<u>MX130/1B</u>	17
<u>MX135/2</u>	19
<u>MX150/1</u>	23
<u>MX150/MIX2Z - ACS</u>	27
<u>HB BOX</u>	29
<u>MX430 - MX530 - MX630</u>	33
<u>MX125/ACS - MX150/ACS</u>	35



MX245/ACS E

Module for instantaneous DHW production up to 40 l/min



MX280/ACS E

Module for instantaneous DHW production up to 85 l/min



MXB200/ACS E

Module floor standing for instantaneous DHW production up to 200 l/min

Available from September 2026

MAXIFLAME®

MAXIFLAME® designs and manufactures advanced modules for the management of biomass heating systems, placing innovation, reliability, and application flexibility at the core of its approach. The experience gained in the sector makes the MAXIFLAME® brand a benchmark for those seeking high-performance, technologically advanced solutions.

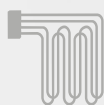
Each product is developed to offer greater versatility than traditional systems, easily adapting to different installations and a wide range of energy requirements, both in residential and professional settings.

Heating systems based on biomass appliances – such as thermo-fireplaces and pellet stoves – generally operate with an open expansion vessel, meaning they are in direct communication with the atmosphere. Integration with gas boilers, which instead operate with a closed, pressurized expansion vessel, requires hydraulic separation of the circuits through a heat exchanger.

Italian regulations require circuit separation when the total output exceeds 35 kW (Ministerial Decree 01/12/1975 and INAIL provisions – R2009 Collection). The ISPESL circular dated 18/09/2006 further clarifies that the presence of a heat exchanger between generators hydraulically separates the heat transfer fluids, eliminating the need to sum the installed outputs.

MAXIFLAME® modules optimize the heat produced by the biomass appliance through a high-efficiency plate heat exchanger, making the energy available both for space heating and for domestic hot water (DHW) production.

Each module is available with an external painted sheet-metal casing or a recessed box and is designed for integration with an optional electronic control unit. When the biomass appliance is not operating or the generated heat is insufficient, the system automatically manages integration with the conventional boiler, ensuring service continuity, constant comfort, and maximum safety.



heating system



traditional heating system



wood fuel



pellet fuel



DHW Domestic Hot Water



puffer



solar thermal system

DEVELOPMENT and INNOVATION

OUR STRENGTHS TO GROW TOGETHER



1. Research and development

We continuously invest in the research and development of our products to identify ever-new solutions and improve the functional efficiency of our systems.



2. Reliability and support

We design reliable, easy-to-maintain systems, complemented by a fast and effective after-sales service aimed at maximizing performance over time.



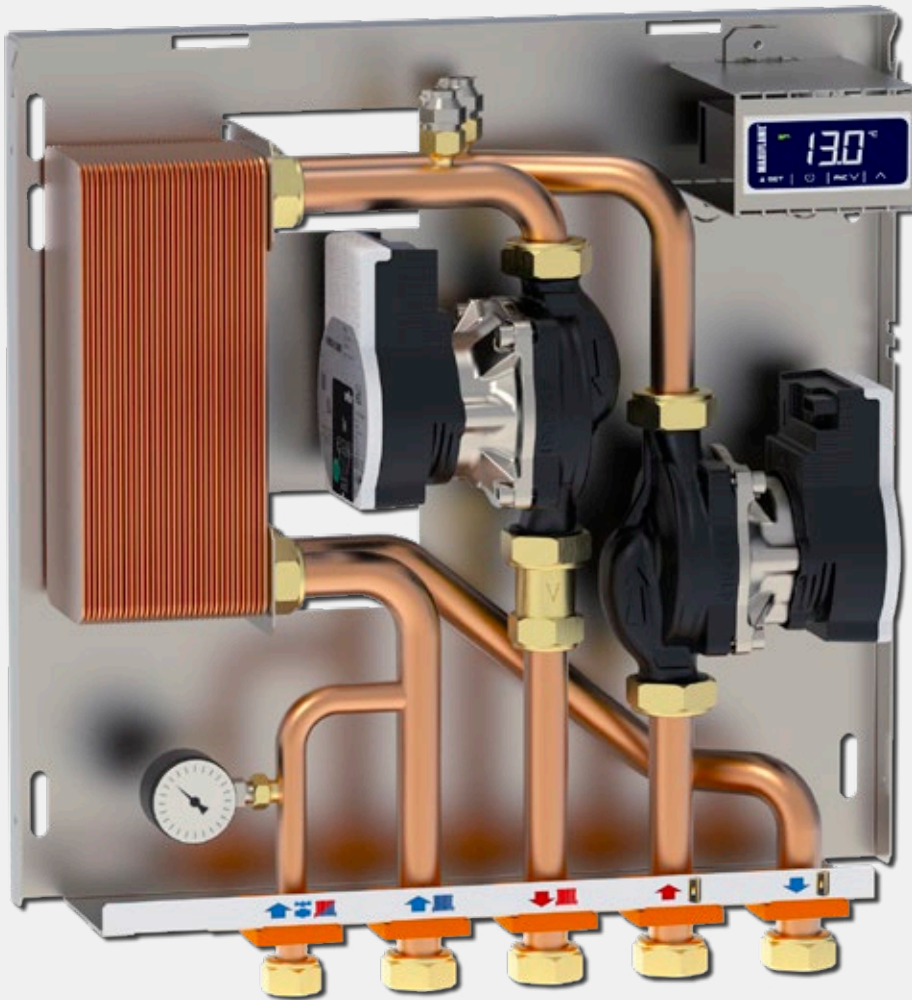
3. Design and attention to detail

We design our systems to enhance both aesthetics and build quality, paying close attention to every detail – including packaging – to strengthen product identity and brand perception.

MX135/1

MAXIFLAME®

The **MX135/1** models allow optimal management of heating systems with two heat generators. Compact, they make installation operations as easy as possible and are designed in such a way to have easy accessibility to all components.



All models are equipped with:

- one/two pumps with 6 mt of head
- 30, 34 and 40 plate exchangers (power up to 40 kW)
- 20 mm diameter copper piping with $\frac{3}{4}$ " connections
- cover box
- air vent taps
- check valve on heating side
- wall mounting kit.

Versions available:

- integrated electronic control unit
- filling system
- direct connection of second generator.

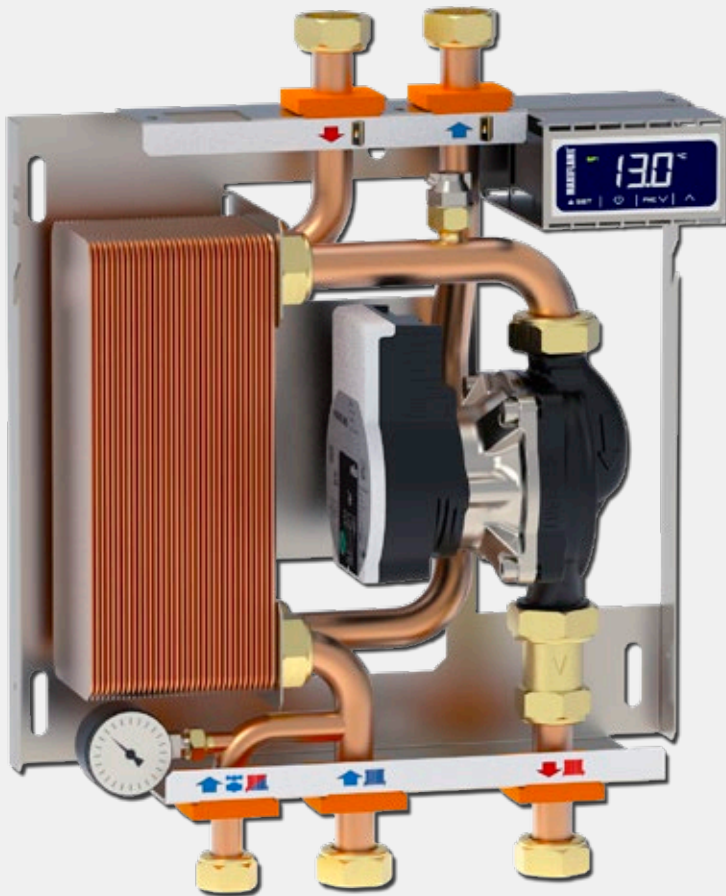
Optional:

- built-in box
- shut-off valves.

MX115/1 Mini

MAXIFLAME®

The models **MX115/1 Mini** allow optimal management of heating systems with two heat generators. Super compact, they make installation as easy as possible. Equipped with direct connections to the first generator at the top and connections at the bottom of the system. They are designed in such a way to have easy accessibility to all components



All models are equipped with:

- one pump with 6 mt of head
- 30, 34 and 40 plate exchangers (power up to 40 kW)
- 20 mm diameter copper piping with $\frac{3}{4}$ " connections
- cover box
- air vent tap
- check valve on heating side
- wall mounting kit.

Versions available:

- integrated electronic control unit
- filling system.

Optional:

- shut-off valves.

MX135/1

Interface module



MX135/1 Mini

Interface module



MX135/1HBL

Interface module with electronic control unit



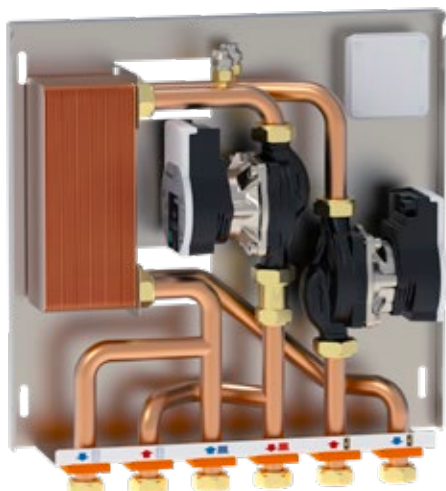
MX135/1HBL Mini

Interface module with electronic control unit



MX135/1C

Interface module with direct connection
second generator



MX135/1C Mini

Interface module with direct connection
second generator



MX135/1CHBL

Interface module with direct connection
second generator and electronic control unit



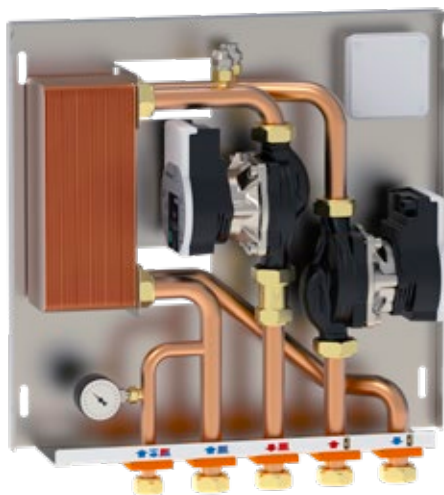
MX135/1CHBL Mini

Interface module with direct connection
second generator and electronic control unit



MX135/1R

Interface module with filling system
on the system side



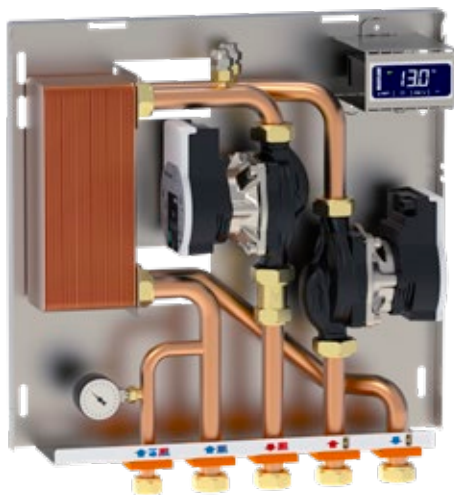
MX135/1R Mini

Interface module with filling system
on the system side



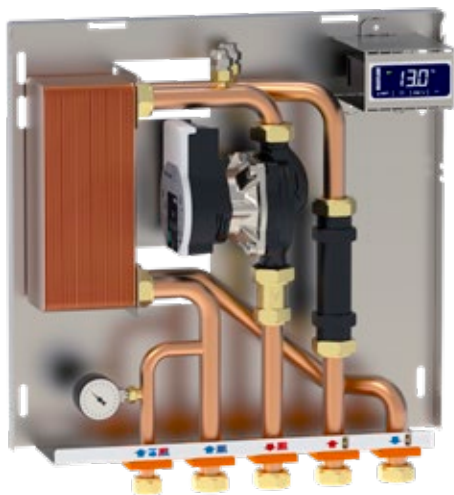
MX135/1RHBL

Interface module with filling system
and electronic control unit



MX135/1RHBL Mini

Interface module with filling system
and electronic control unit



MX135/1 SLX

Interface module with electronic control unit and shut-off valves



MX135/1 SLX Mini

Interface module with electronic control unit and shut-off valves



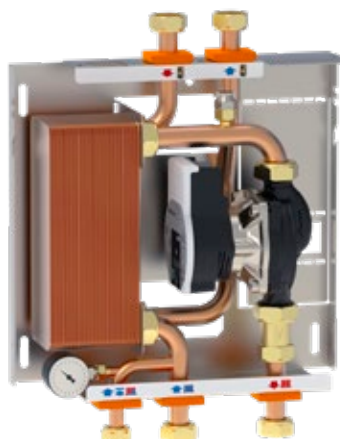
MX115/1 Mini

Interface module



MX115/1R Mini

Interface module with filling system on the system side



MX115/1HBL Mini

Interface module with electronic control unit



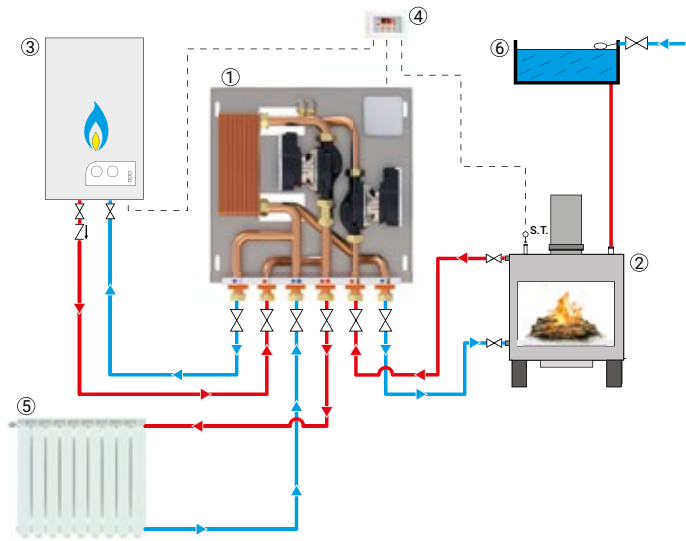
MX115/1RHBL Mini

Interface module with electronic control unit and filling system on the system side



Installation examples

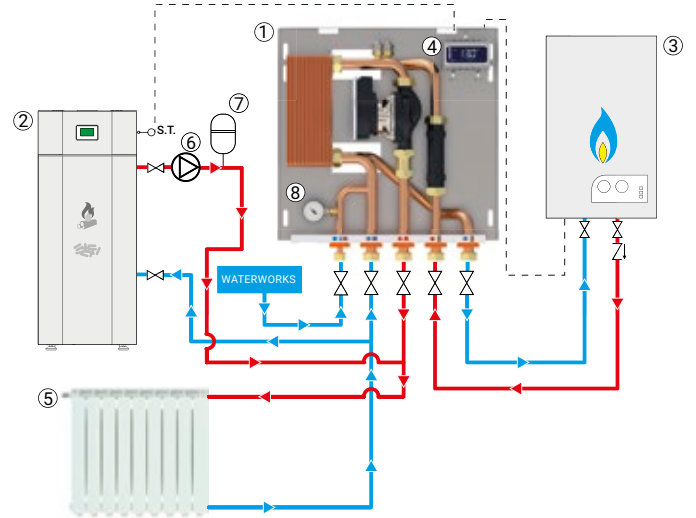
MX135/1C



LEGEND

- 1) Module MX135/1C
- 2) Heating product
- 3) Traditional boiler
- 4) Control unit SLX T2
- 5) Heating system
- 6) Open expansion tank
- S.T.) Temperature probe

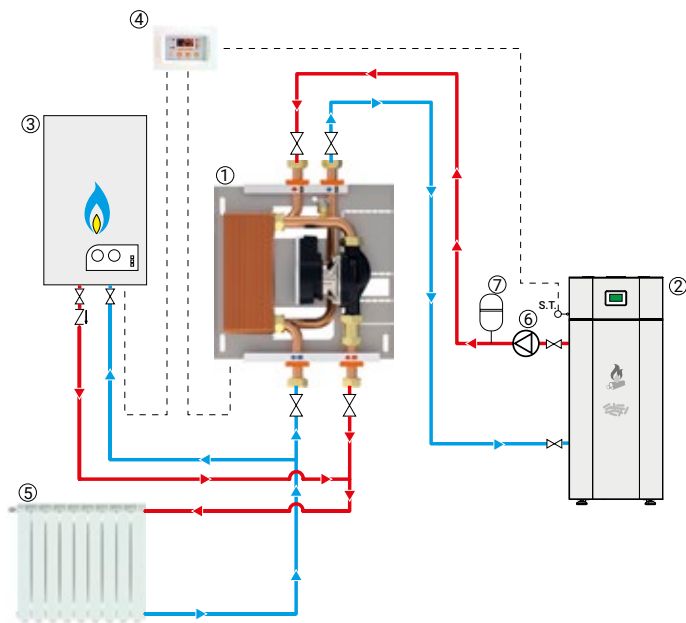
MX135/1RHBL Mini



LEGEND

- 1) Module MX135/1RHBL Mini
- 2) Heating product
- 3) Traditional boiler
- 4) Control unit HB L03
- 5) Heating system
- 6) Pump
- 7) Expansion tank
- S.T.) Temperature probe

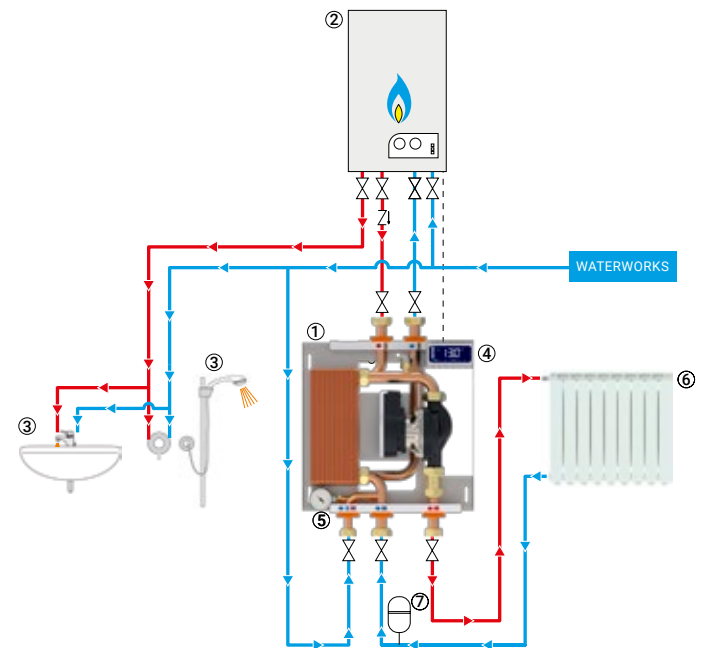
MX115/1 Mini



LEGEND

- 1) Module MX115/1 Mini
- 2) Heating product
- 3) Traditional boiler
- 4) Control unit SLX/T2
- 5) Heating system
- 6) Pump
- 7) Expansion tank
- S.T.) Temperature probe

MX115/1RHBL Mini



LEGEND

- 1) Module MX115/1RHBL Mini
- 2) Heating product
- 3) Traditional boiler
- 4) Electronic control unit HB L03
- 5) Heating system
- 6) Pump
- 7) Expansion tank
- S.T.) Temperature probe

Control units



MAXIFLAME



Control unit
MAXIFRESH



Control unit
MAXISOL



Control unit
HB L03



Control unit
SLX/T2



Control unit
SLX/T3

MX120/1

MAXIFLAME®

The models **MX120/1** allow to manage the heating system with one generator and to produce DHW.

Super compact, they make installations as easy as possible.

They are designed in such a way to have easy accessibility to all components.



All models are equipped with:

- with or without a pump of 6 mt of head
- exchangers with 20 and 30 plates (with DHW production from 12 to 17,5 l/min)
- flow switch
- diverting valve
- copper pipes diameter 14/20 mm with connections ½" and ¾"
- cover box
- air vent valve

- check valve heating side
- wall mounting kit.

Optional:

- built-in box
- shut-off valves.

MX120/1

Interface module DHW and heating management



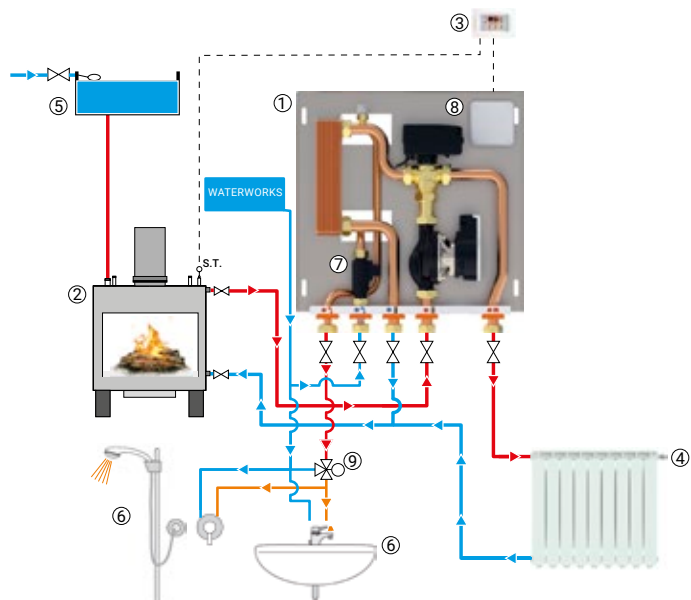
MX120/1 Mini

Interface module DHW and heating management



Installation examples

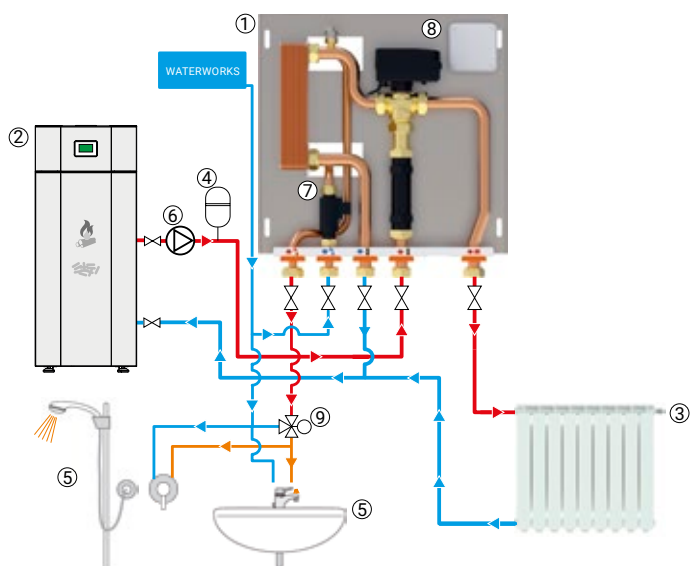
MX120/1



LEGEND

- 1) Module MX120/1
- 2) Heating product
- 3) Control unit SLX/T2
- 4) Heating system
- 5) Open expansion tank
- 6) DHW utilities
- 7) Flow switch
- 8) Diverting valve
- 9) Mixing valve
- S.T.) Temperature probe

MX120/1 Mini



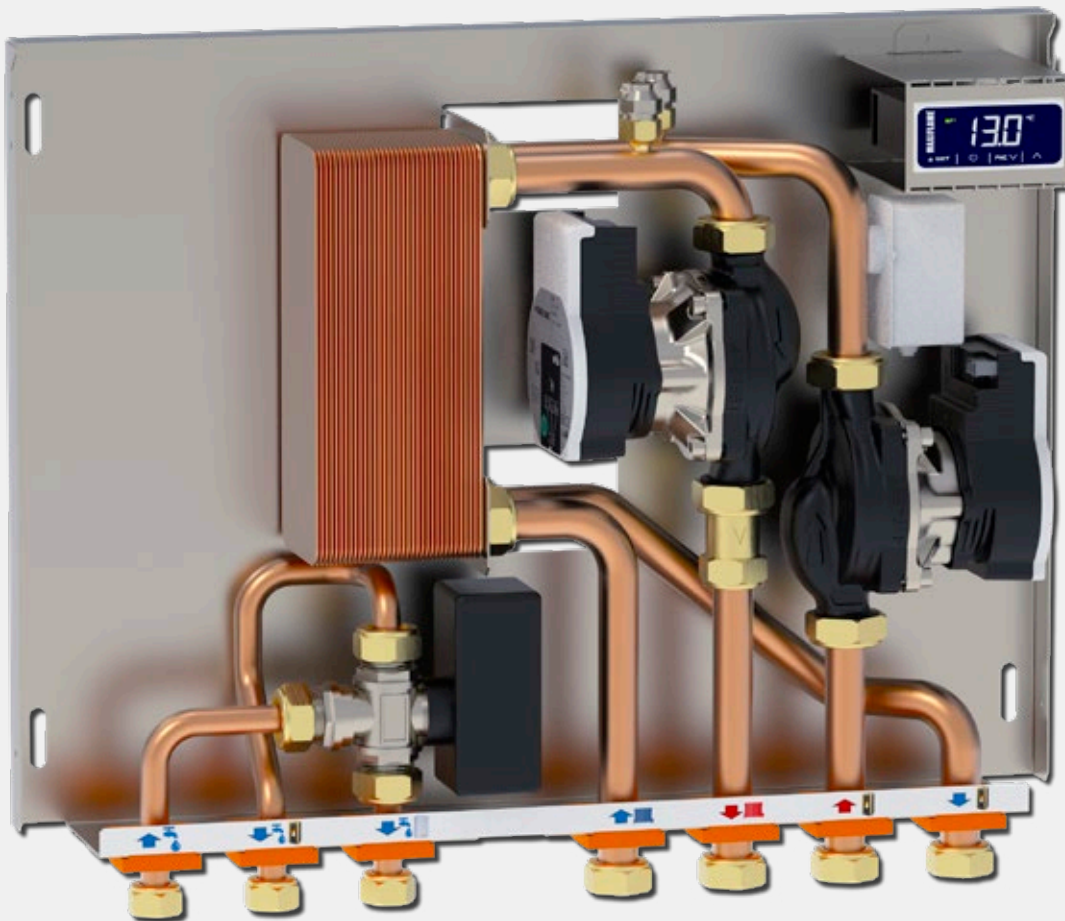
LEGEND

- 1) Module MX120/1 Mini
- 2) Heating product
- 3) Heating system
- 4) Expansion tank
- 5) DHW utilities
- 6) Pump
- 7) Flow switch
- 8) Diverting valve
- 9) Mixing valve
- S.T.) Temperature probe

MX135/1V

MAXIFLAME®

The models **MX135/1V** allow optimal management of heating systems with two heat generators distributing cold water for DHW production alternately to one or the other depending on what is in operation. Extremely compact, they make installation as easy as possible and they are designed in such a way to have easy accessibility to all components.



All models are equipped with:

- one or two pumps with 6mt of head
- 30, 34 and 40-plate exchangers (power up to 40 kW)
- diverting valve for DCW
- 14/20 mm diameter copper piping with 1/2" and 3/4" connections
- cover box
- air vent taps
- check valve heating side
- wall mounting kit

Versions available:

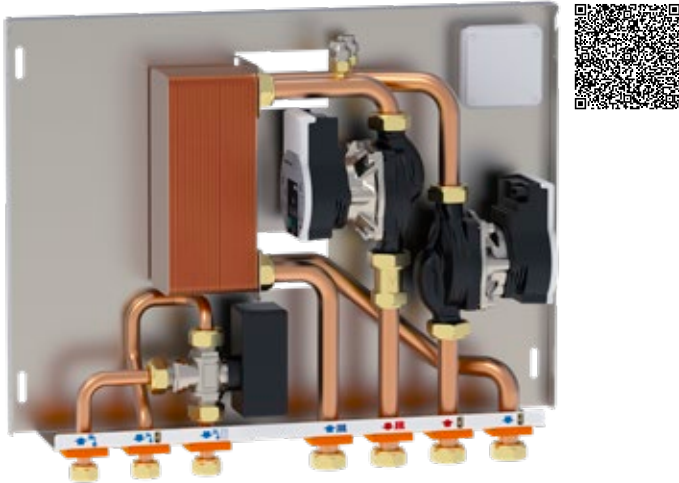
- integrated electronic control unit

Optional:

- built-in box
- shut-off valves.

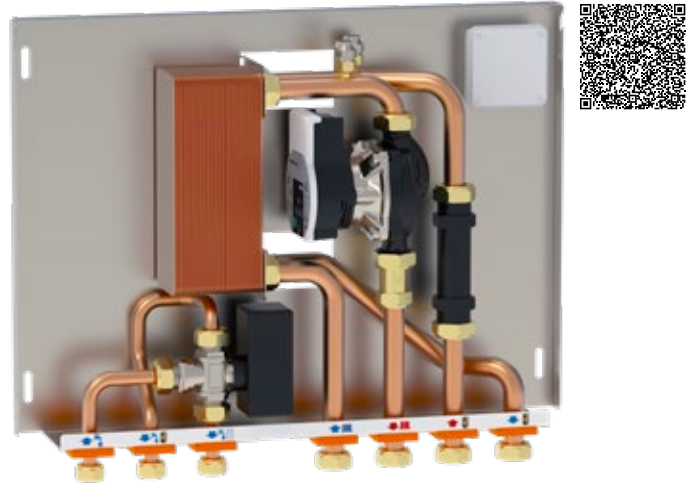
MX135/1V

Interface module with control valve of the flow of DCW



MX135/1V Mini

Interface module with control valve of the flow of DCW



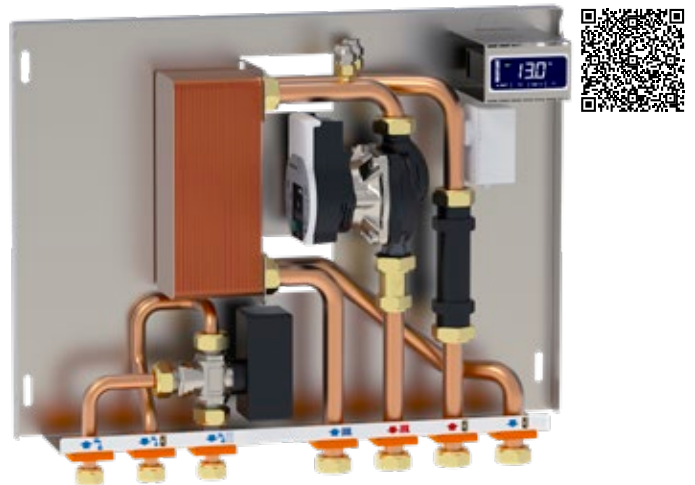
MX135/1VHBL

Interface module with electronic control unit and control valve of the flow of DCW



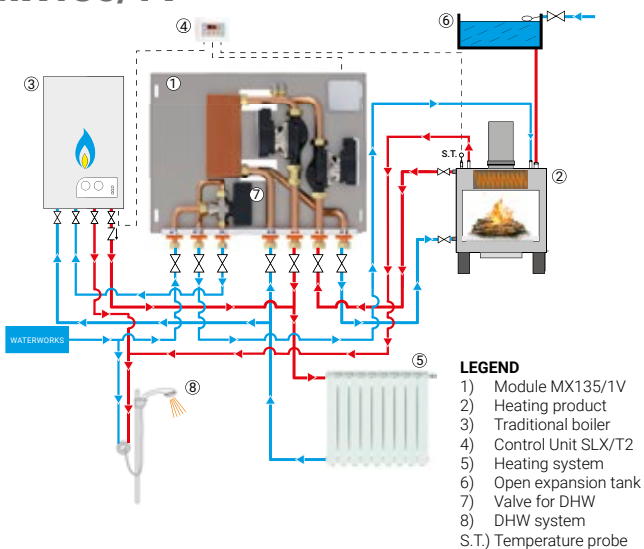
MX135/1VHBL Mini

Interface module with electronic control unit and control valve of the flow of DCW

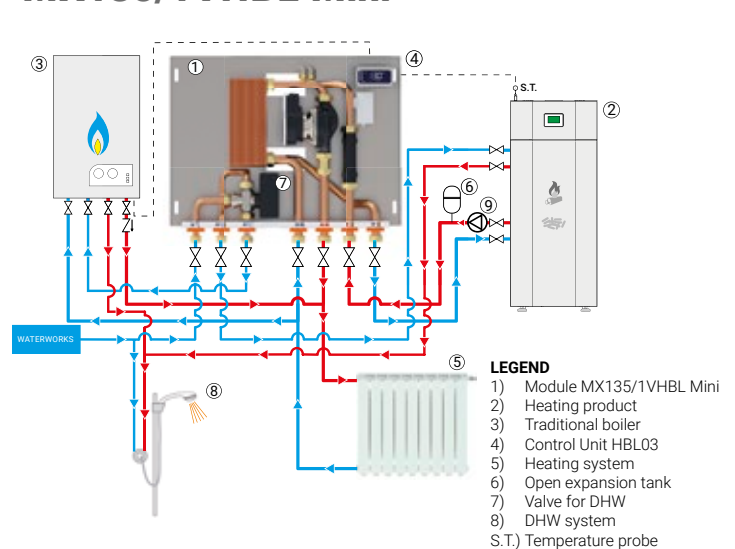


Installation examples

MX135/1V



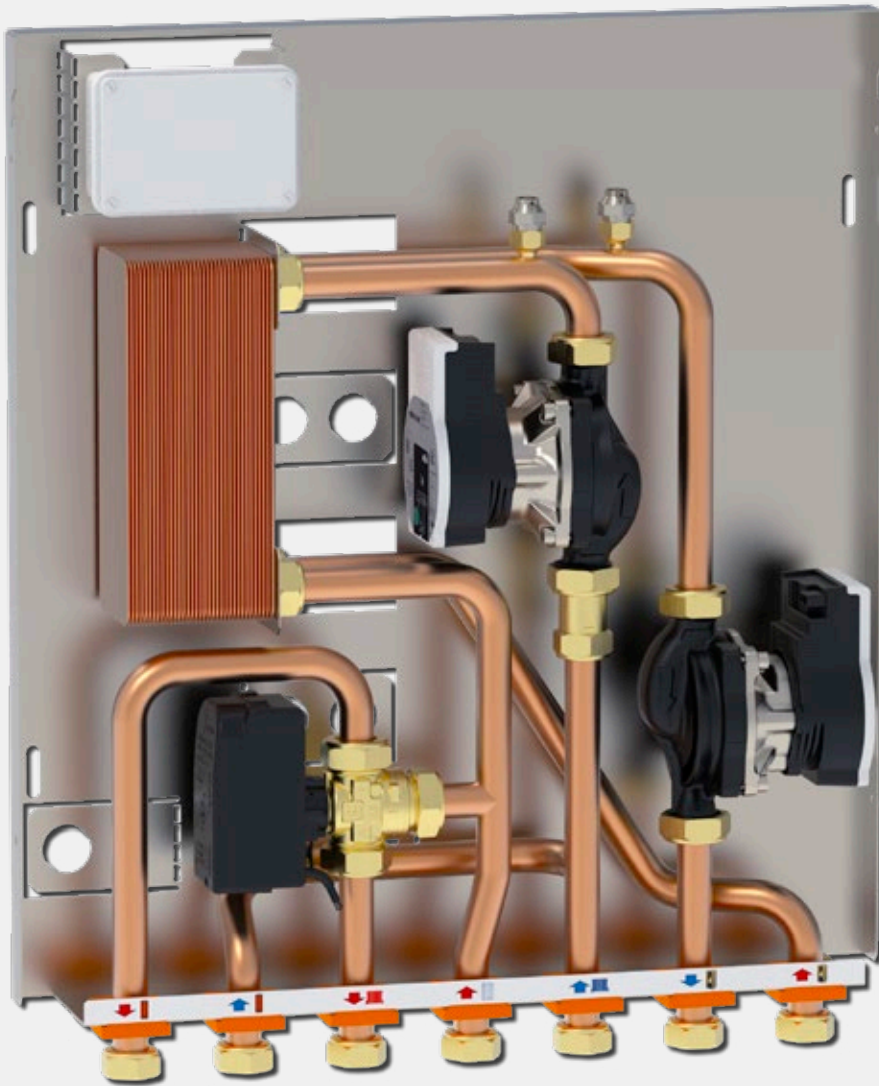
MX135/1VHBL Mini



MX130/1B

MAXIFLAME®

The models **MX130/1B** allow optimal management of heating systems with two heat generators giving priority to integrate a DHW boiler according to the active generator. Extremely compact, they make installation as easy as possible and they are designed in such a way to have easy accessibility to all components.



All models are equipped with:

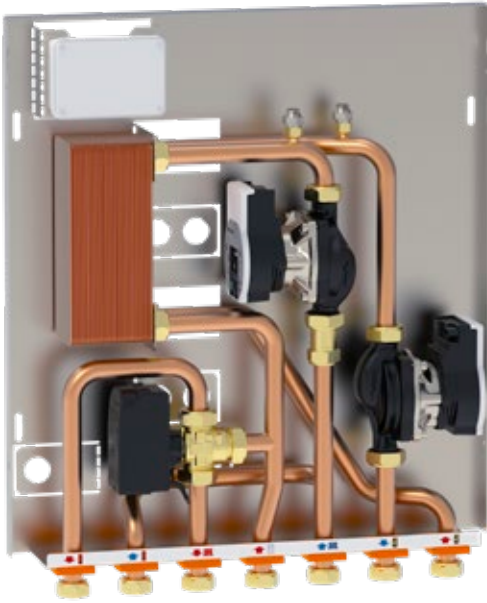
- one or two pumps with 6mt of head
- 34 and 40 plate exchangers (power up to 40 kW)
- diverting valve for DHW boiler
- 20 mm diameter copper piping with $\frac{3}{4}$ " connections
- cover box
- air vent taps
- check valve heating system
- wall mounting kit.

Optional:

- built-in box
- shut-off valves.

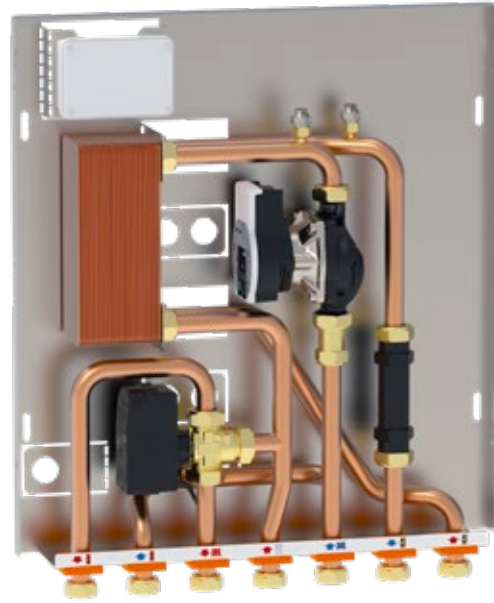
MX130/1B

Interface module with management valve
DHW boiler priority



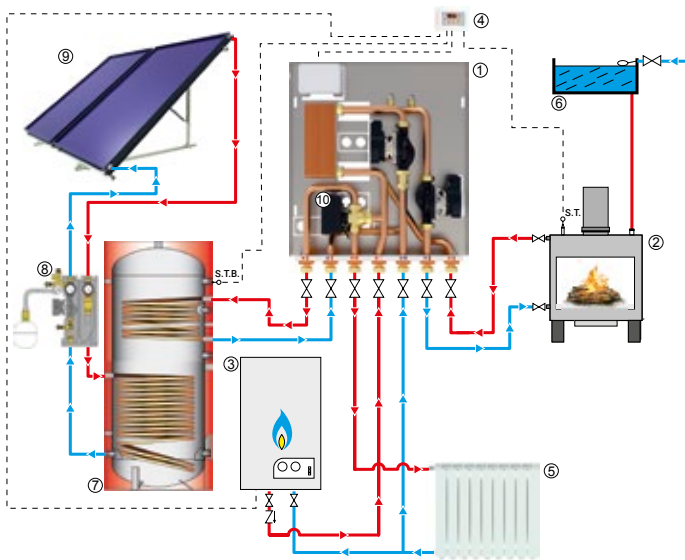
MX130/1B Mini

Interface module with management valve
DHW boiler priority



Installation examples

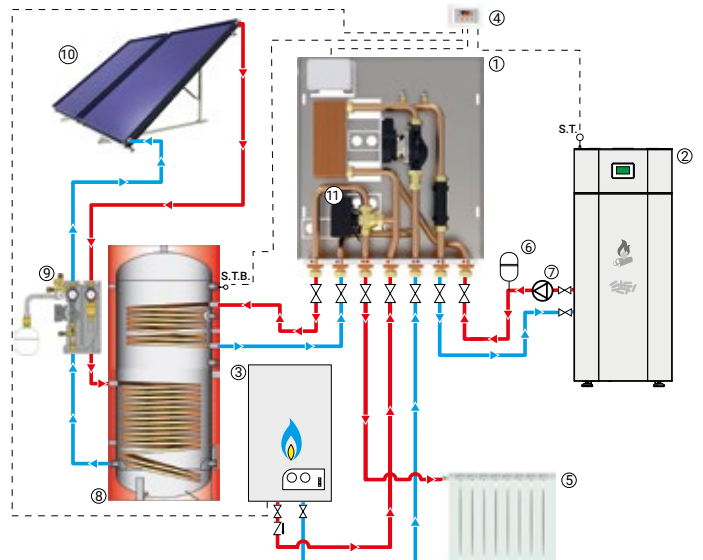
MX130/1B



LEGEND

- 1) Module MX130/1B
- 2) Heating product
- 3) Traditional boiler
- 4) Control unit SLX/T2
- 5) Heating system
- 6) Open expansion tank
- 7) DHW solar boiler
- 8) Solar group
- 9) Solar panels
- 10) Diverting valve
- S.T.) Temperature probe
- ST.B.) DHW boiler probe

MX130/1B Mini



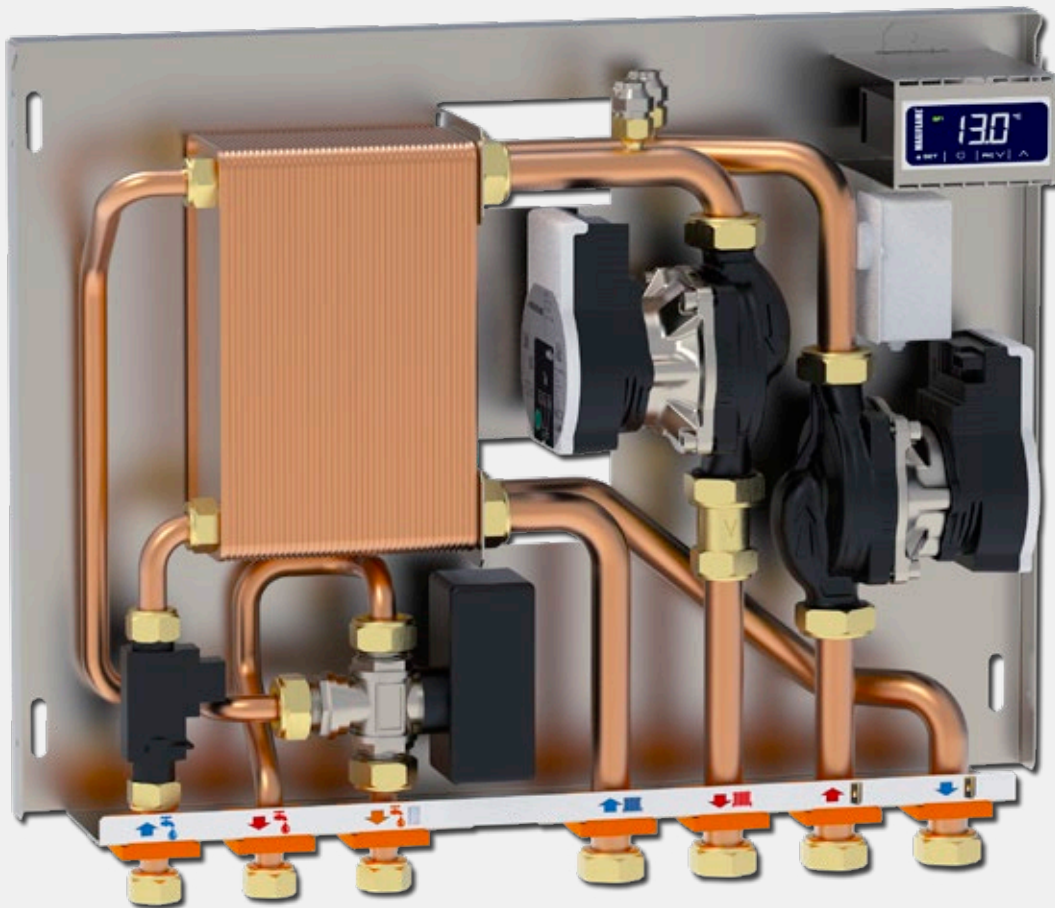
LEGEND

- 1) Module MX130/1B Mini
- 2) Heating product
- 3) Traditional boiler
- 4) Control unit SLX/T2
- 5) Heating system
- 6) Expansion tank
- 7) Pump
- 8) DHW solar boiler
- 9) Solar group
- 10) Solar panels
- 11) Diverting valve
- S.T.) Temperature probe
- ST.B.) DHW boiler probe

MX135/2

MAXIFLAME®

The **MX135/2** models allow optimal management of heating systems equipped with two heat generators and DHW production. Extremely compact due to the use of a three-circuit exchanger. They make installation operations as easy as possible and are designed in such a way to have easy accessibility to all components.



All models are equipped with:

- one or two pumps with 6m of head
- 54-plate exchangers: 20/34 and 16/38 (power up to 40 kW and 10,5 or 9 l/min DHW)
- 14/20 mm diameter copper piping with ½" and ¾" connections
- flow switch DHW priority
- cover box
- air vent taps
- check valve heating side
- wall mounting kit.

Versions available:

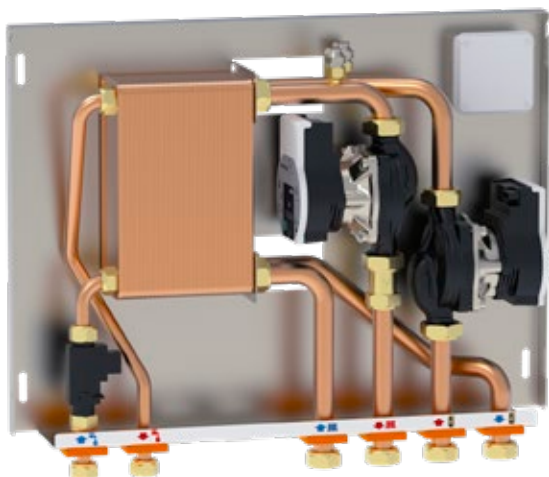
- integrated electronic control unit
- filling system
- direct connection to the second generator
- DHW diverting valve.

Optional:

- built-in box
- shut-off valves.

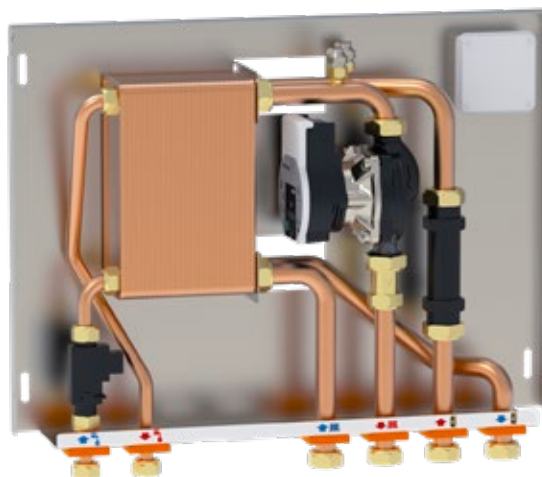
MX135/2

Interface module with DHW production



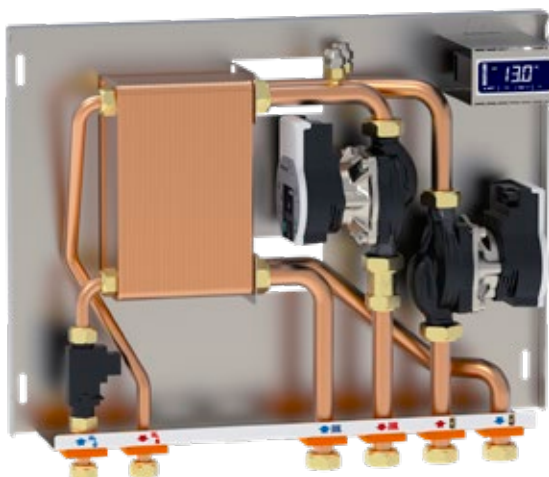
MX135/2 Mini

Interface module with DHW production



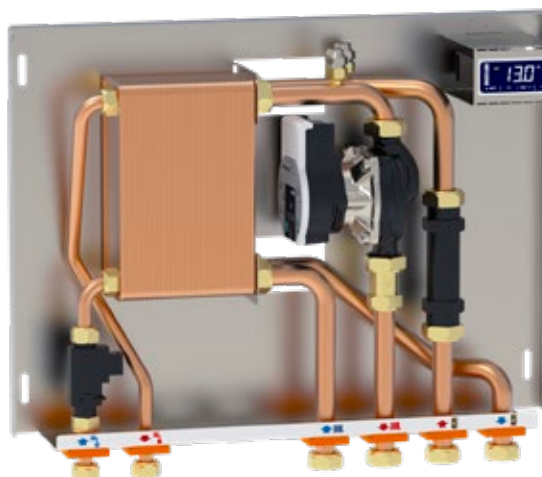
MX135/2HBL

Interface module with electronic control unit and DHW production



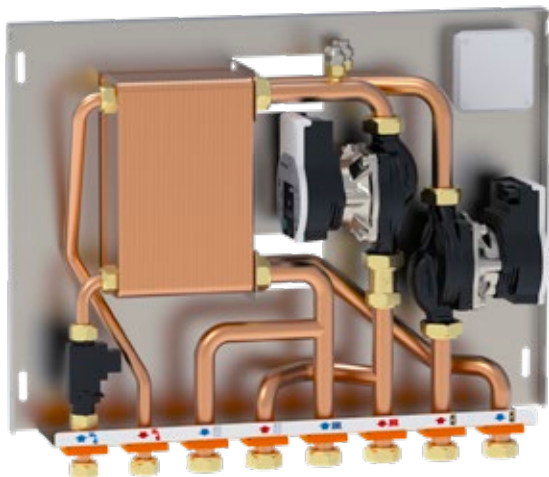
MX135/2HBL Mini

Interface module with electronic control unit and DHW production



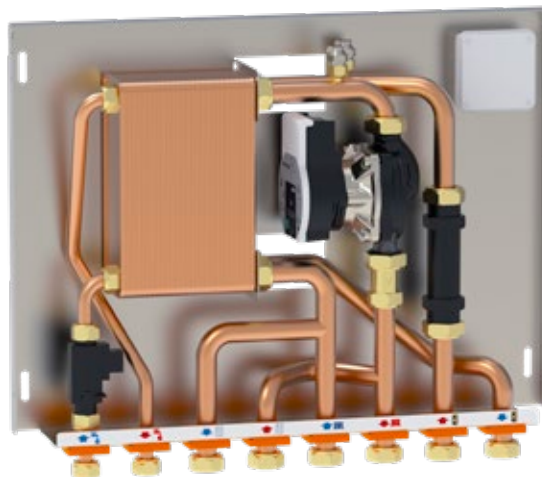
MX135/2C

Interface module with DHW production and direct connection to the second generator



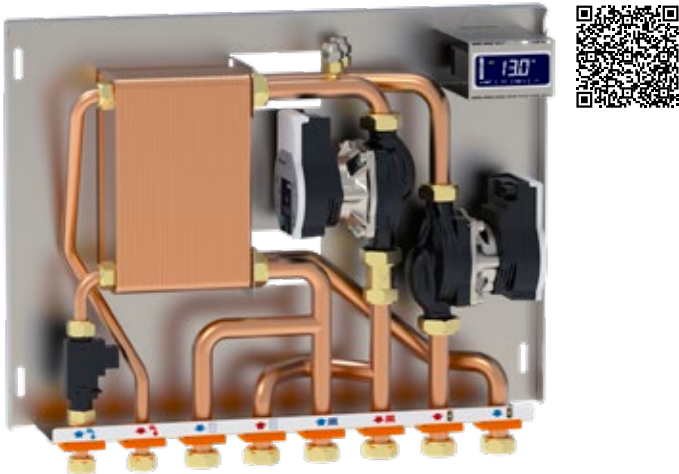
MX135/2C Mini

Interface module with DHW production and direct connection to the second generator



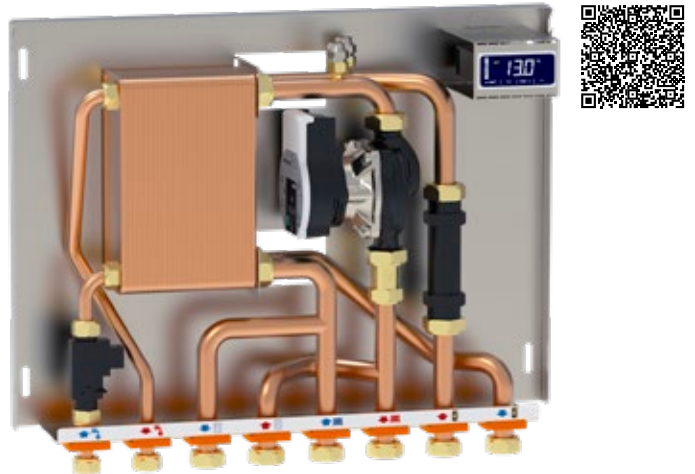
MX135/2CHBL

Interface module with electronic control unit, DHW production and direct connection to second generator



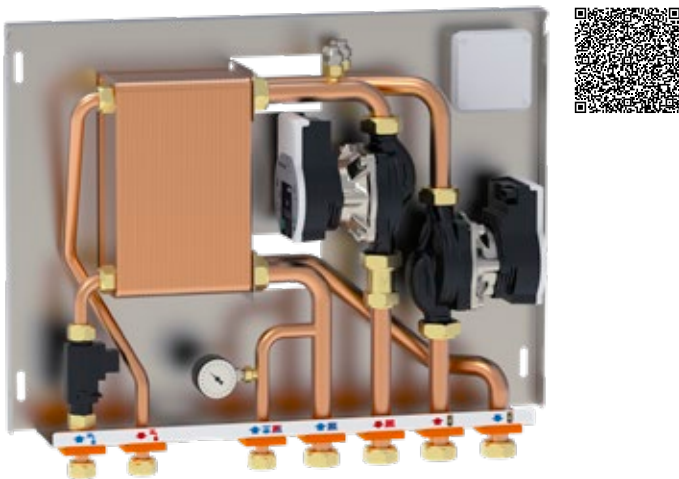
MX135/2CHBL Mini

Interface module with electronic control unit, DHW production and direct connection to second generator



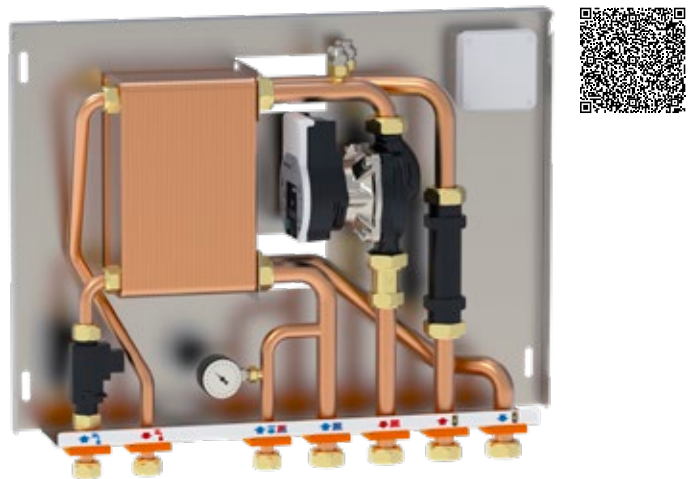
MX135/2R

Interface module with DHW production and filling system on its side



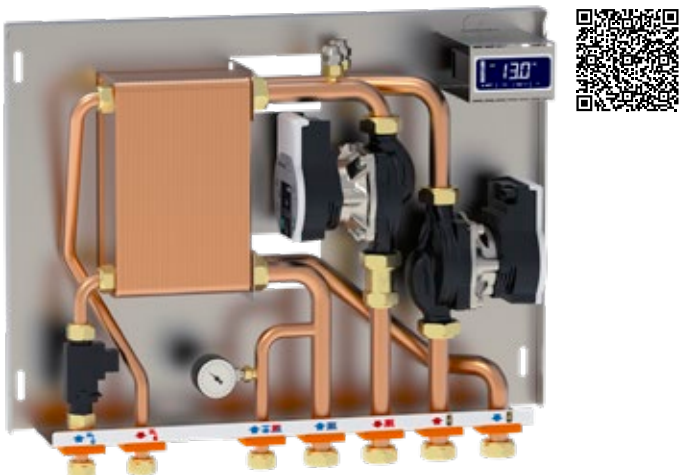
MX135/2R Mini

Interface module with DHW production and filling system on its side



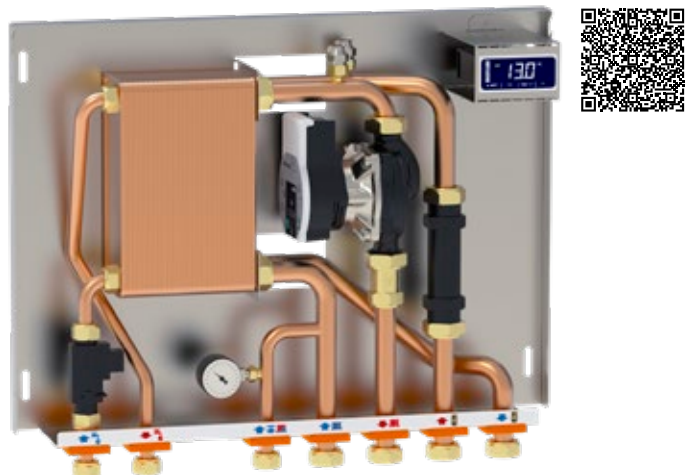
MX135/2RHBL

Interface module with electronic control unit, DHW production and filling system on its side



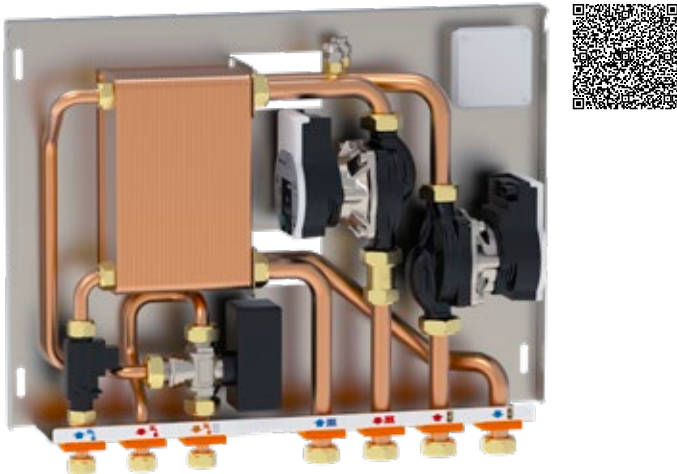
MX135/2RHBL Mini

Interface module with electronic control unit, DHW production and filling system on its side



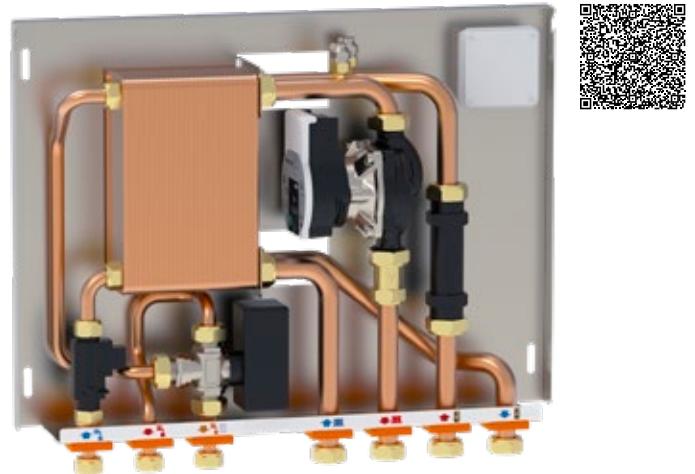
MX135/2V

Interface module with DHW production and domestic priority valve



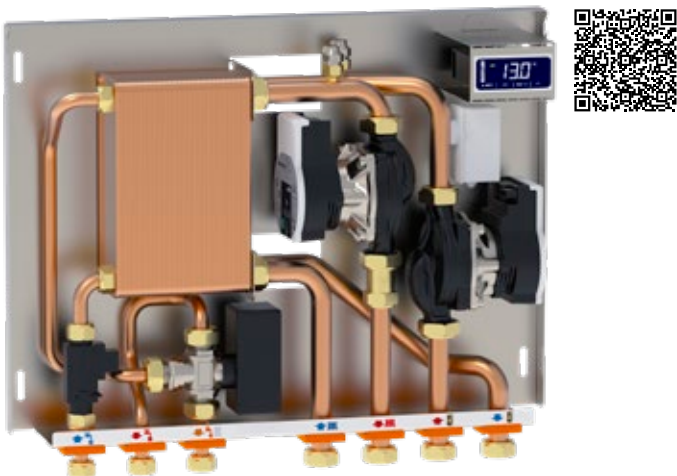
MX135/2V Mini

Interface module with DHW production and domestic priority valve



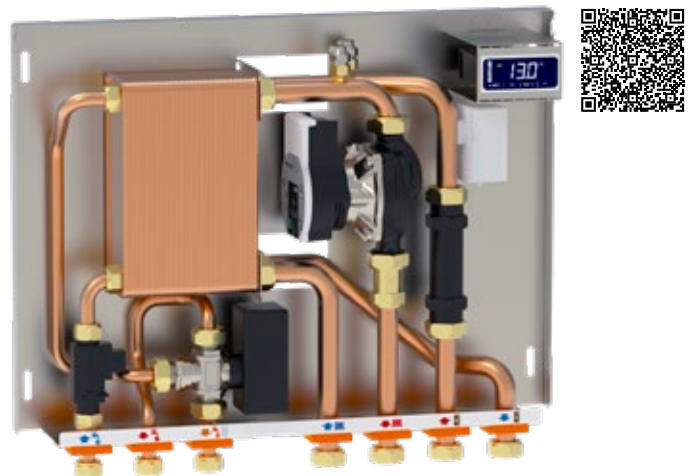
MX135/2VHBL

Interface module with DHW production, electronic control unit and domestic priority valve



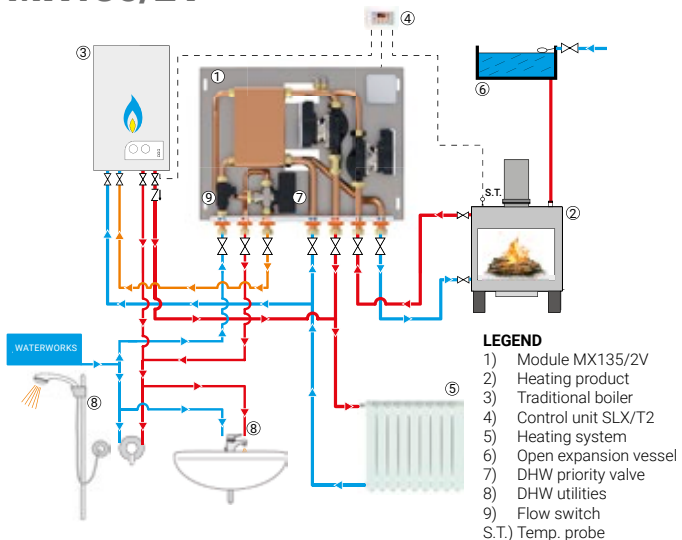
MX135/2VHBL Mini

Interface module with DHW production, electronic control unit and domestic priority valve

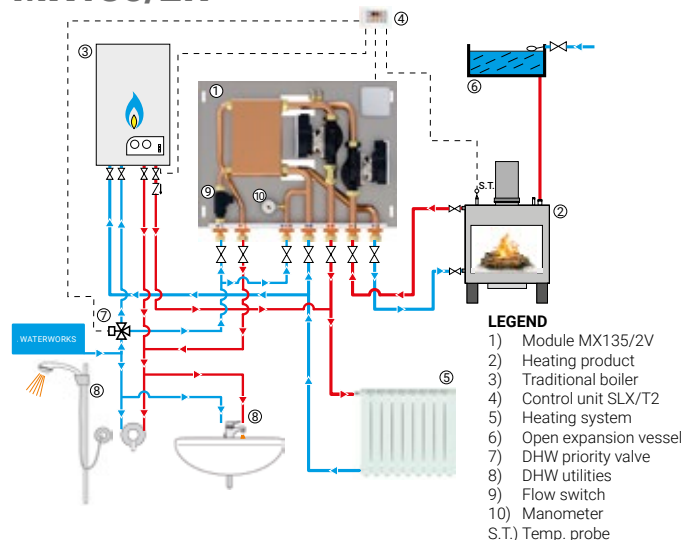


Installation examples

MX135/2V



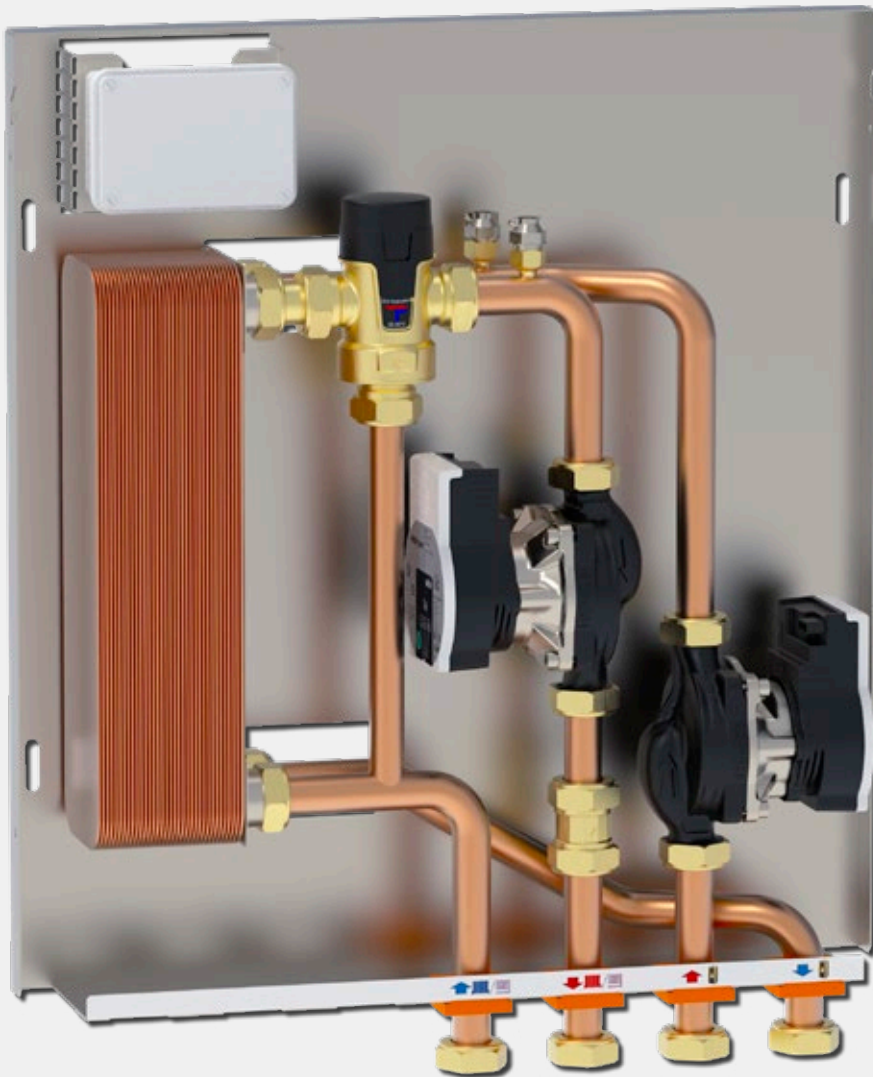
MX135/2R



MX150/1

MAXIFLAME®

The **MX150/1** models allow to manage heating systems with two heat generators. Compact, they make installation as easy as possible and are designed in such a way to have easy accessibility to all components



All models are equipped with:

- one or two pumps with 6 or 8 mt of head (heating side)
- 20, 30 and 40-plate exchangers (power up to 70 kW)
- 22 mm diameter copper piping with 1" connections
- cover box
- air vent taps
- check valve heating side
- wall mounting kit.

Versions available:

- direct connection to the second generator
- anticondensation system
- fixed-point thermostatic control (25/45°C or 35/65°C).

Optional:

- built-in box
- shut-off valves.

MX150/1

Interface module



MX150/1 Mini

Interface module



MX150/1C

Interface module with direct connection to the second generator



MX150/1C Mini

Interface module with direct connection to the second generator



MX150/1A

Interface module with anticondensation valve



MX150/1A Mini

Interface module with anticondensation valve



MX150/MIX

Interface module with fixed-point control



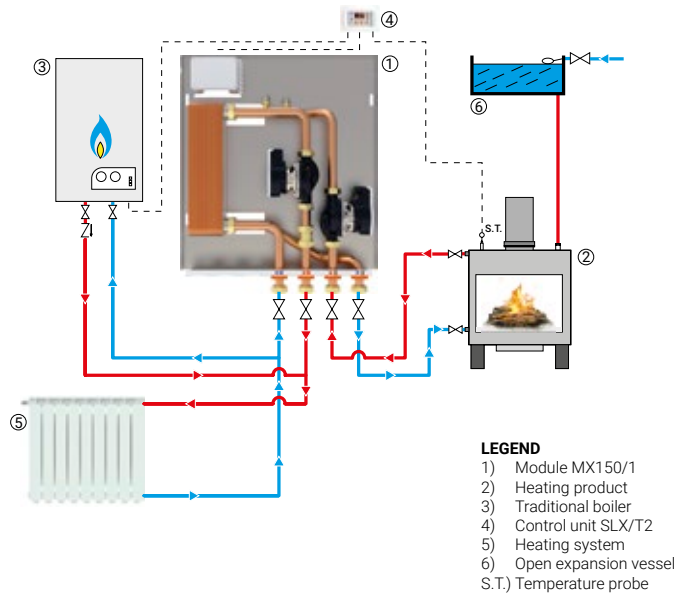
MX150/MIX Mini

Interface module with fixed-point control

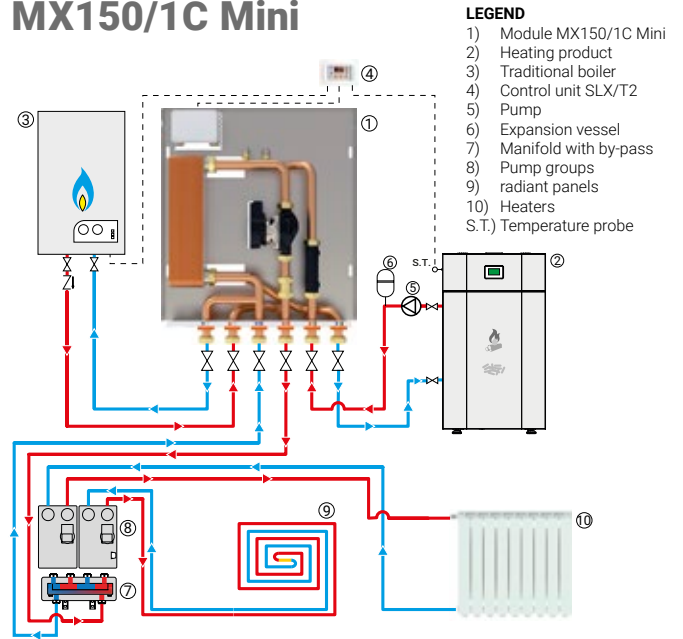


Installation examples

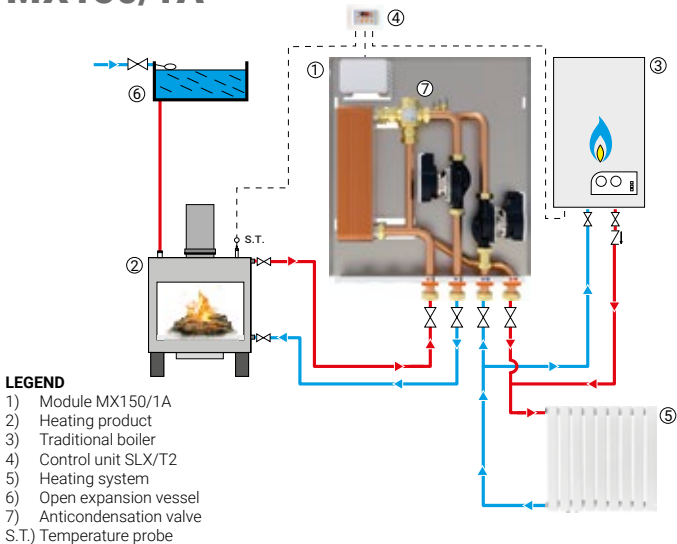
MX150/1



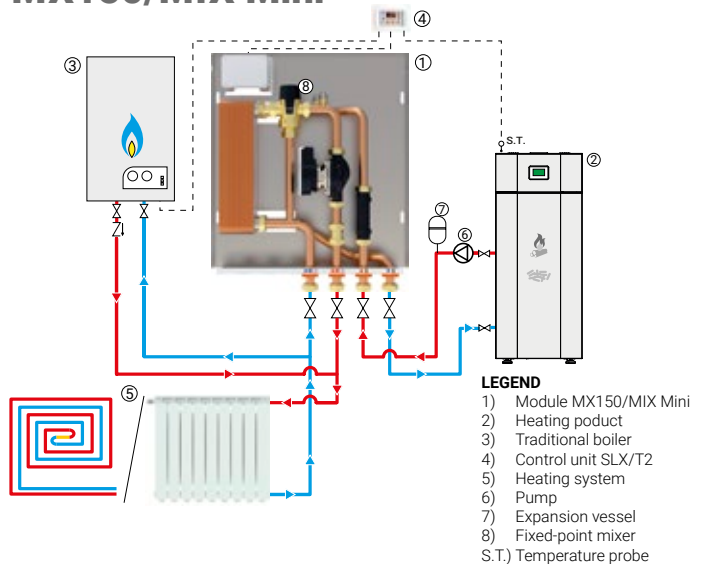
MX150/1C Mini



MX150/1A



MX150/MIX Mini



Pumps



MAXIFLAME®



PARA SCU



PARA STG



PARA MAXO



STRATOS PARA C

Heat exchangers



**SERIES B3-014
SERIES XB06L+-1**



**SERIES XB12L-1
SERIES XB37**

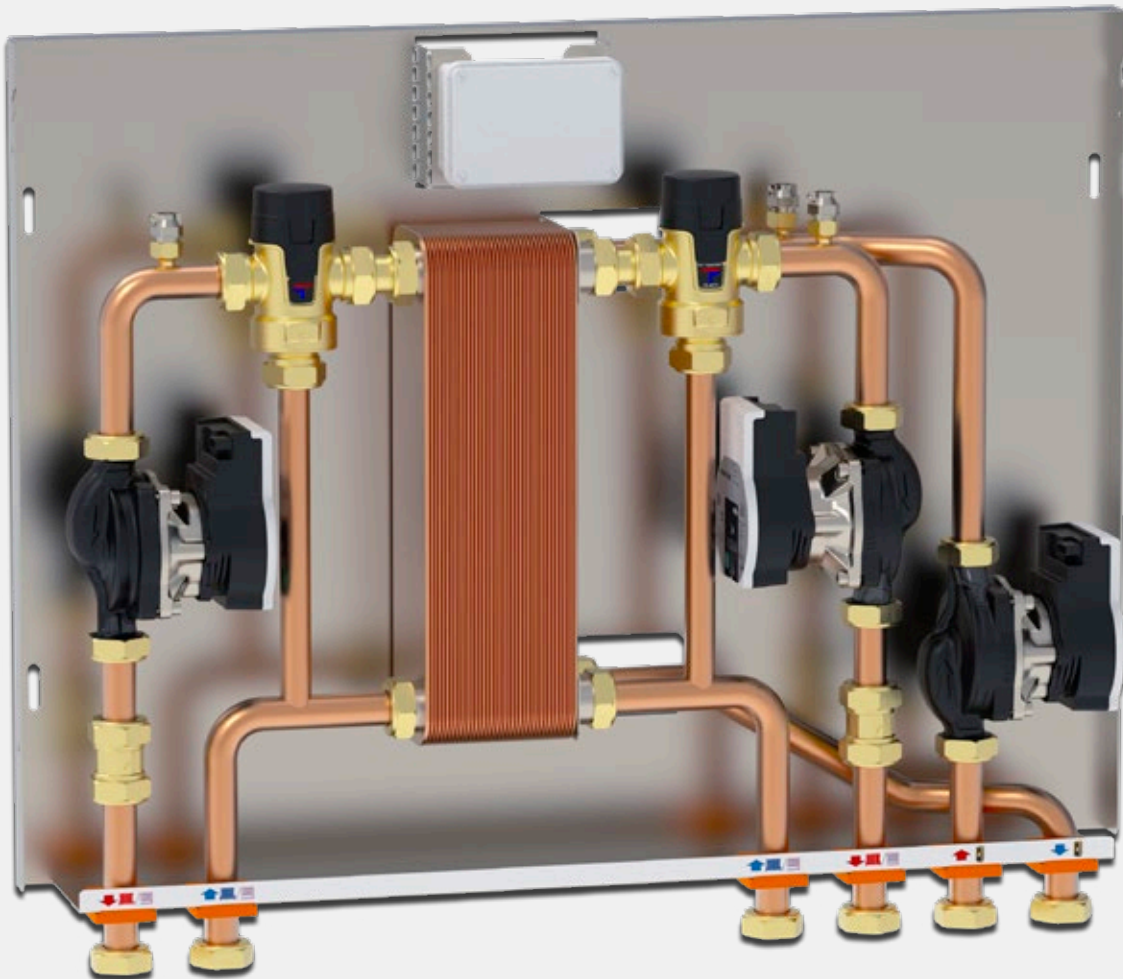


SERIES XB59BM-1

MX150/MIX2Z - ACS



The **MX150/MIX2Z - ACS** models allow optimal management of heating systems equipped with one or more heat generators with fixed-point thermostatic regulation and production of domestic hot water. Compact, given the use of a three-circuit exchanger. They make installation operations as easy as possible and are designed in such a way as to have easy accessibility to all components.



All models are equipped with:

- one, two or three pumps with 6 or 8 mt of head (heating side)
- 40-plate exchangers (2 zones) and 46 plates (1 zone + DHW) : 20/20 e 30/16 (power up to 45 kW and 25 l/min DHW)
- 18/22 mm diameter copper piping with 3/4" and 1" connections
- flow switch DHW priority
- cover box
- air vent taps

- check valve heating side
- wall mounting kit.

Versions available:

- two fixed-point zones (25/45°C or 35/65°C)
- one fixed-point zone (25/45°C or 35/65°C) and DHW production.

Optional:

- shut-off valves.

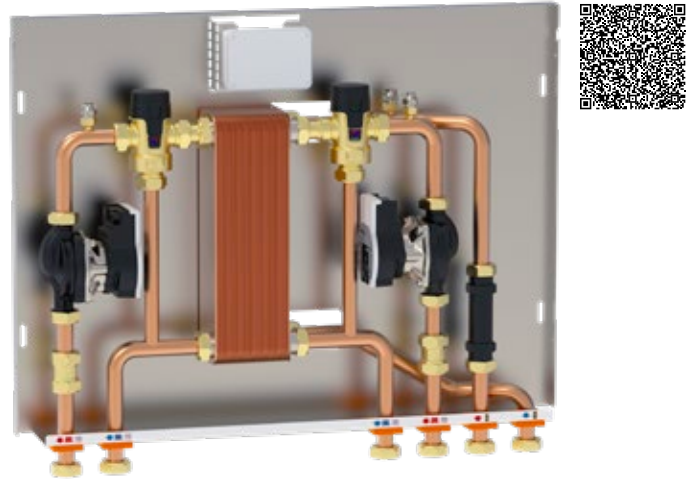
MX150/MIX2Z

Interface module with two-zone fixed-point control



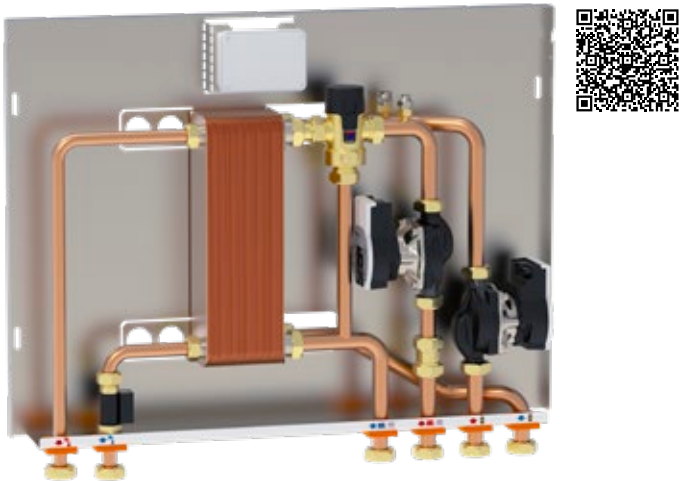
MX150/MIX2Z Mini

Interface module with two-zone fixed-point control



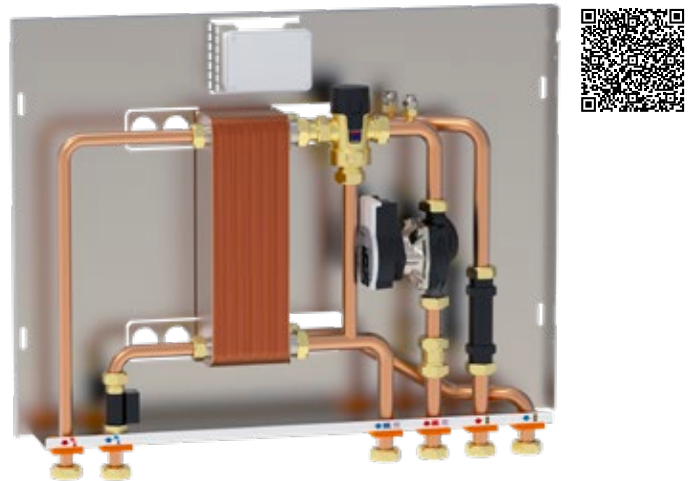
MX150/MIX ACS

Interface module with DHW production and fixed-point control



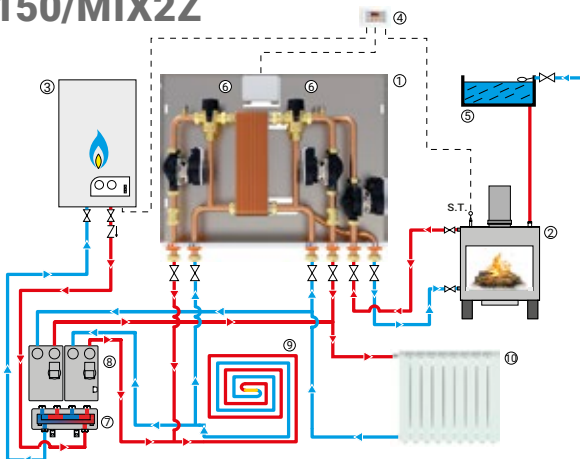
MX150/MIX ACS Mini

Interface module with DHW production and fixed-point control



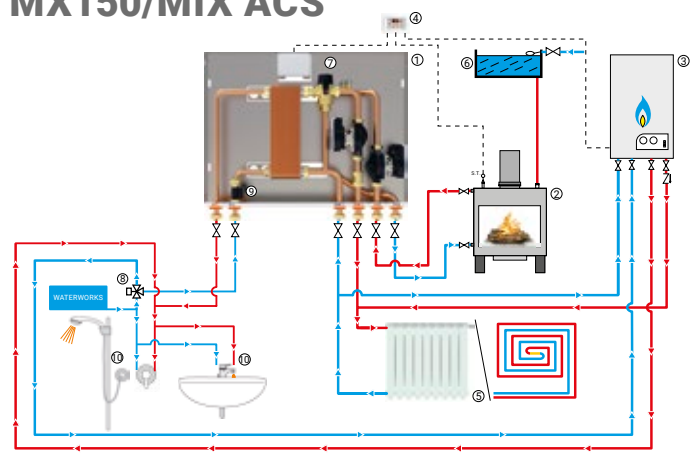
Installation examples

MX150/MIX2Z



- LEGEND**
- | | | |
|-----------------------|--------------------------|-------------------------|
| 1) Module MX150/MIX2Z | 4) Control unit SLX/T2 | 8) Pump groups |
| 2) Heating product | 5) Open expansion vessel | 9) Radiant panels |
| 3) Traditional boiler | 6) Fixed-point mixer | 10) Heaters |
| | 7) Manifold with by-pass | S.T.) Temperature probe |

MX150/MIX ACS



- LEGEND**
- | | | |
|-------------------------|--------------------------|-------------------------|
| 1) Module MX150/MIX ACS | 4) Control unit SLX/T2 | 8) Diverting valve |
| 2) Heating product | 5) Heating system | 9) Flow switch |
| 3) Traditional boiler | 6) Open expansion vessel | 10) DHW utilities |
| | 7) Fixed-point mixer | S.T.) Temperature probe |

HB BOX

MAXIFLAME®

The **HB BOX** models are compact distribution modules for zone heating systems. They can manage two or three zones in a wall-mounted or built-in version. The zones can be supplied with direct circulation, thermostatic mixed circulation or electronic mixed circulation.



All models are equipped with:

- two or three pumps with 6mt of head
- tubazioni in rame da 20 mm di diametro con connessioni da 1"
- cover box or built-in box
- jolly automatic air vent
- check valve heating side
- wall mounting kit
- probe holders supply and return
- shut-off valves.

Versions available:

- with manifold/with by-pass and/or manifold with separating function
- fixed-point thermostatic regulation (25/45°C or 35/65°C)
- electronic fixed-point or climatic regulation
- actuator with LK 100 SmartConfort fixed point control unit
- actuator with LK 110 climate control unit
- actuator LK 950 with 0-10V 24 VDC/AC regulation
- actuator LK 950 with 3-point regulation 230VAC

HB BOX 20

Distribution module for two-zone systems

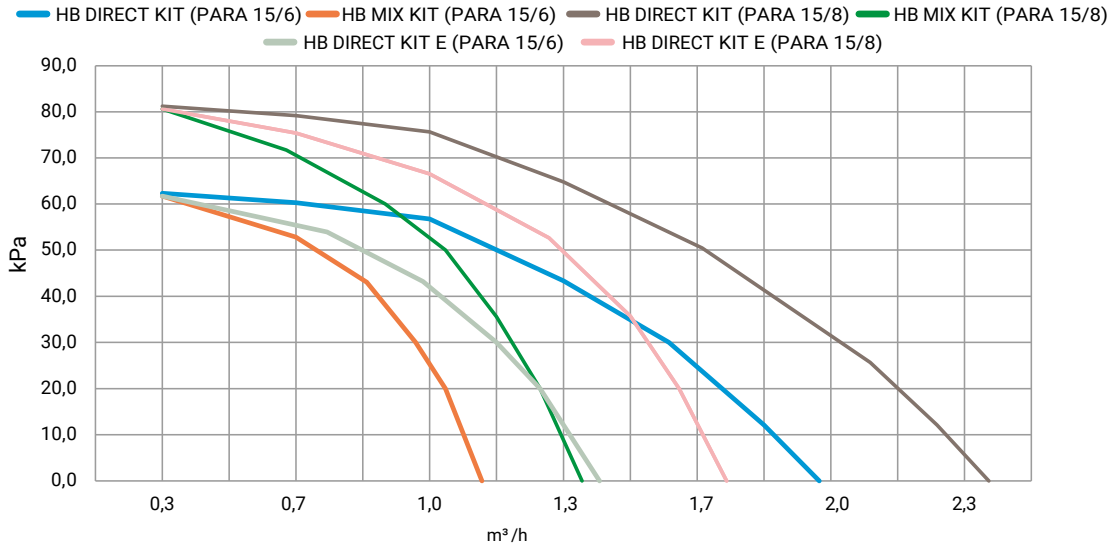


HB BOX 30

Distribution module for two-zone systems

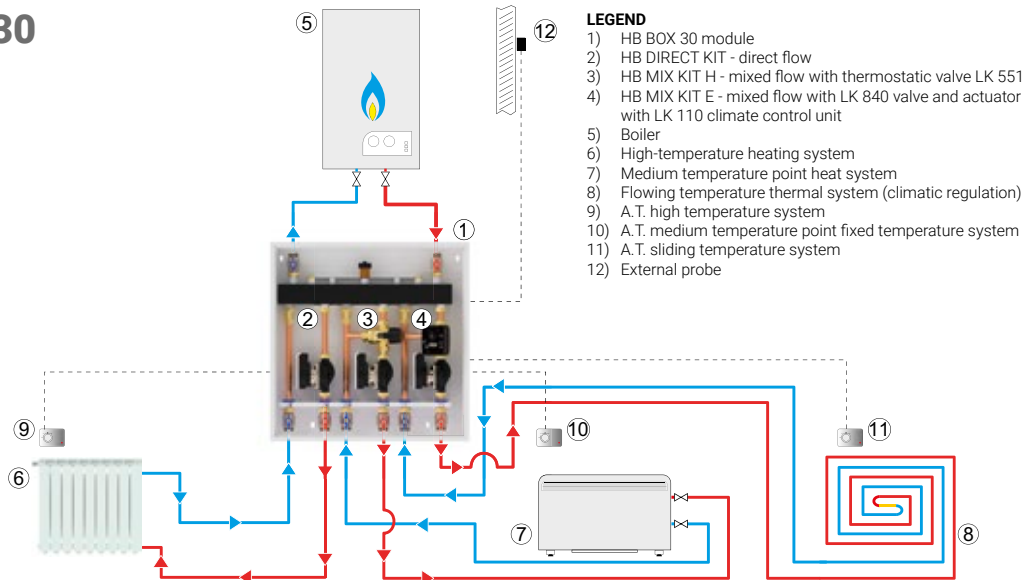


Performance with Wilo Para 15/6 SC and Wilo Para 15/8 SC pumps



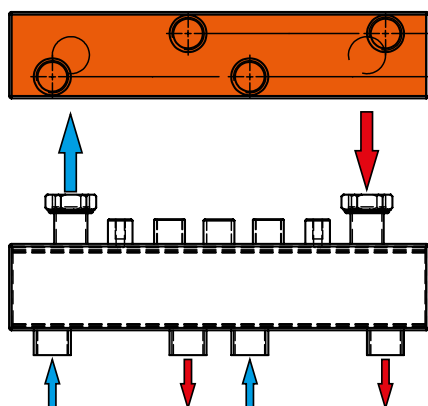
Installation examples

HB BOX 30

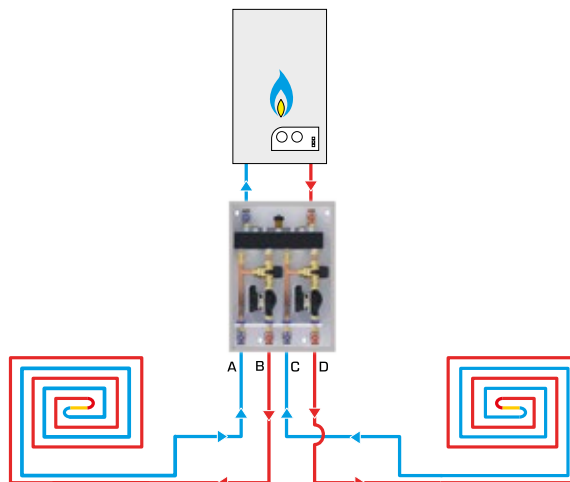


Available configurations

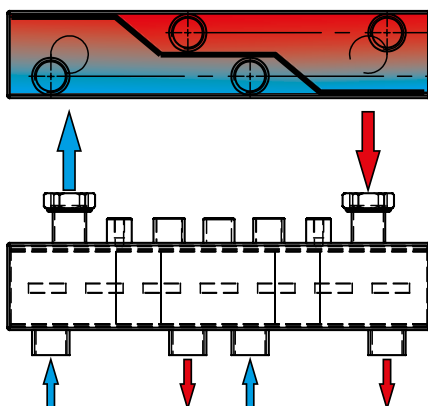
HB BOX 20 C HB BOX 30 C HYDRAULIC COMPENSATOR



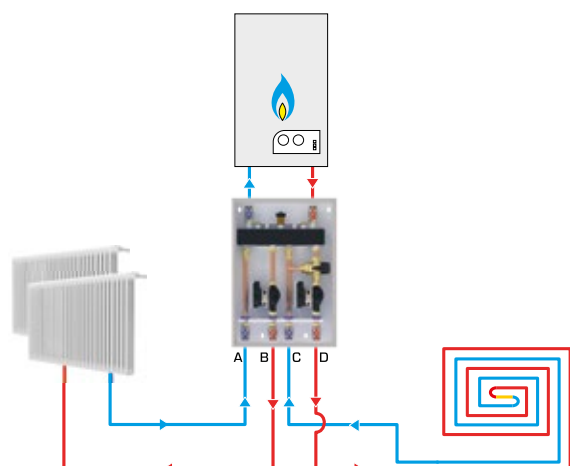
Configuration particularly suitable for direct installation on boilers and/or heat pumps and mixed distribution groups (HB MIX KIT L - HB MIX KIT H). The flow and return sections are fully communicating between both primary and secondary circuits.



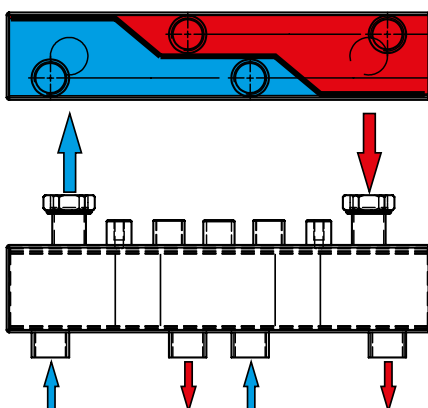
HB BOX 20 S HB BOX 30 S MANIFOLD WITH BY-PASS



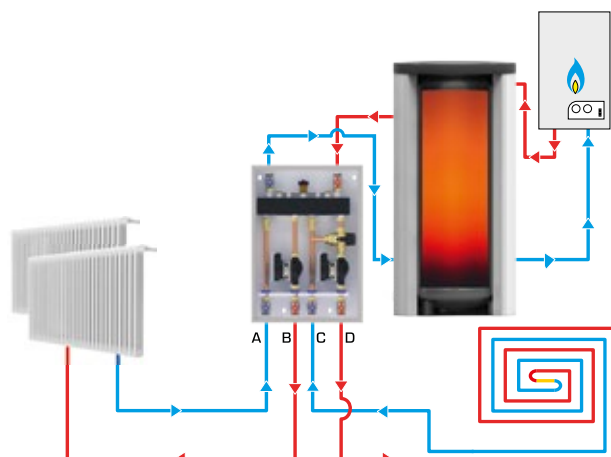
Configuration particularly suitable for direct installation on boilers and/or heat pumps and direct (HB DIRECT KIT) and mixed (HB MIX KIT L - HB MIX KIT H) distribution groups with any configuration. The flow and return sections are separated but communicating between both primary and secondary circuits in order to balance the secondary flow and return temperatures.



HB BOX 20 CL HB BOX 30 CL MANIFOLD



Configuration particularly suitable for installation on puffers with primary fluid circulation without pump and direct distribution groups (HB DIRECT KIT) and mixed ones (HB MIX KIT L - HB MIX KIT H) with any configuration. The flow and return sections are completely separated and the pumps of the kits ensure the proper circulation of the primary fluid by working in suction on the puffer.

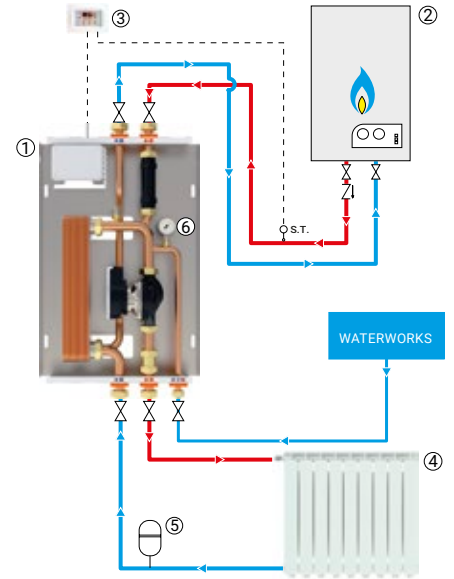


MX140/1CCR Mini

Interface module for condensing boiler



Installation examples



- LEGEND**
- 1) Module MX140/1CCR Mini
 - 2) Condensing boiler
 - 3) Control unit SLX/T2
 - 4) Heating system
 - 5) Expansion tank
 - 6) Manometer
 - S.T.) Temp. probe

Hydroblock-h2o check valves with concealed installation



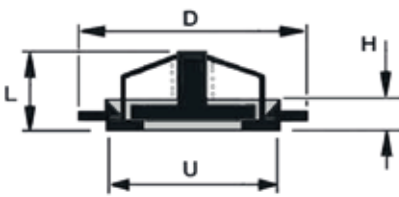
HYDROBLOCK-H2O SC
with PA66 plug and automatic air vent system
PN 10 bar - Temp. Max 130°C



HYDROBLOCK-H2O SS
with AISI 316 stainless steel plug
PN 16 bar - Temp. Max 200°C



Operating system

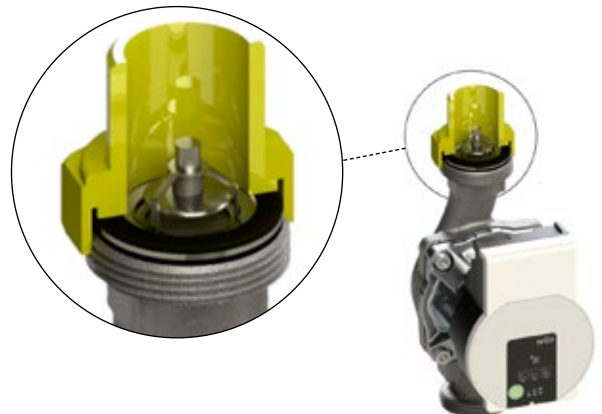


Size		Compatible with fitting type	D (mm)	L (mm)	H (mm)	U (mm)
mm	inch.					
15	½	G1"	29	12	4	20
20	¾	G1" ¼	39	12	4	25
25	1"	G1" ½	44	18	4,5	32
32	1" ¼	G2"	55	22	5	40
40	1" ½	G2" ½	62	24	6	46

Flow direction labels to be applied on the fitting



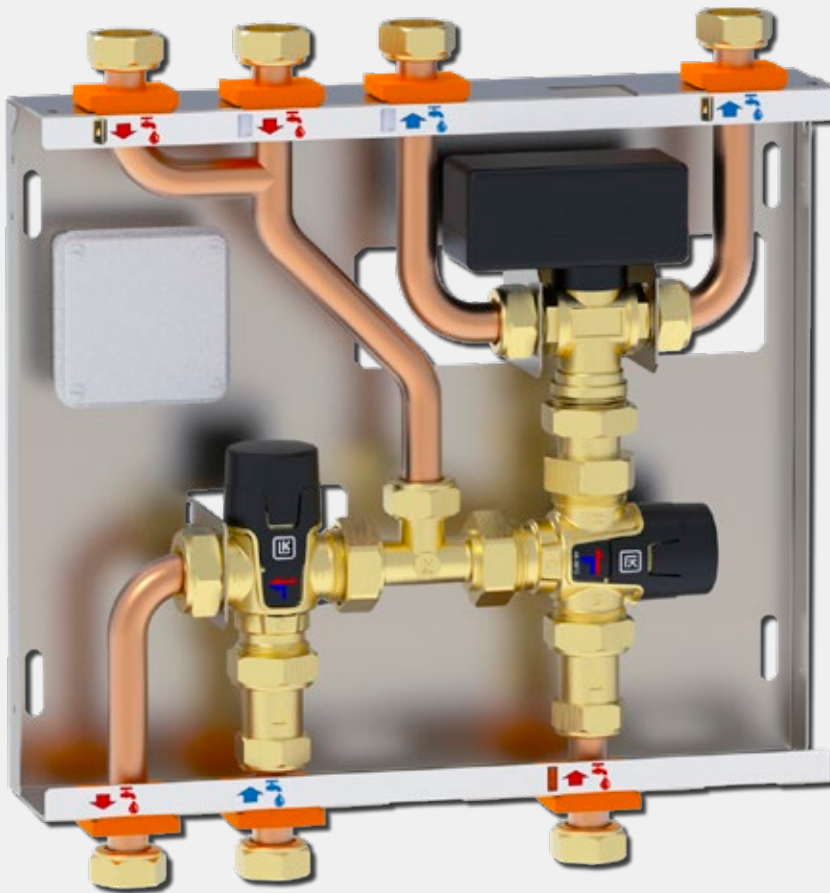
Installation on pump fitting



MX430 - MX530 - MX630

MAXIFLAME

The **MX430** and **MX530** models are developed for the management of domestic hot water supplied by several heat sources. They can handle systems with up to 3 users at the same time. The **MX630** model is designed for domestic hot water circulation and temperature control. It can handle domestic hot water systems with up to three users at the same time.



All models are equipped with:

- MX630: a 6 metre head bronze pump
- thermostatic control 35-65°C
- thermostatic diverting valve 42-52°C
- diverting valve
- 18 mm diameter copper piping with 3/4" connections
- cover box
- check valve
- wall mounting kit.

Optional:

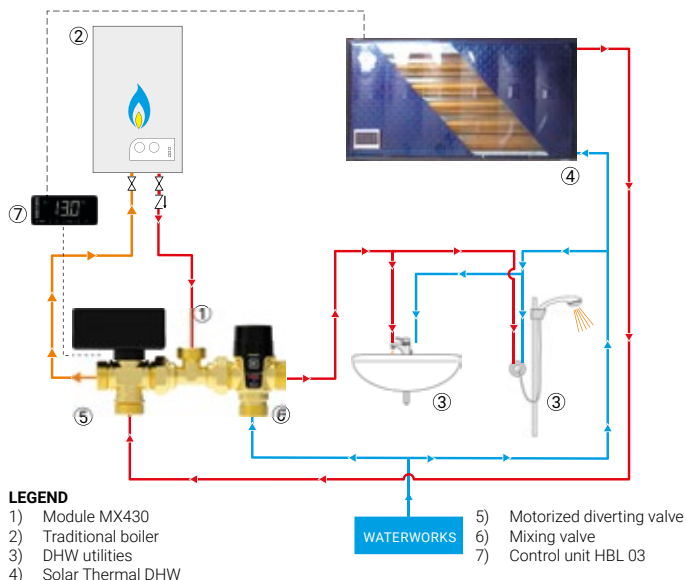
- shut-off valves.

MX430

Kit for DHW management



Installation example

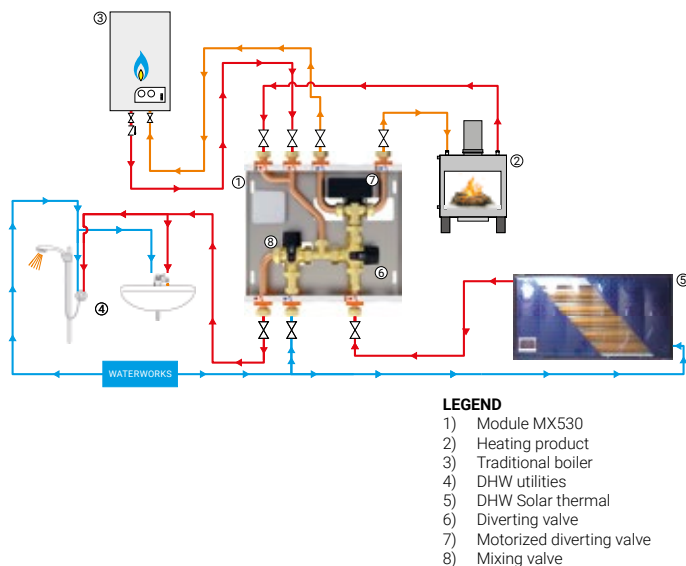


MX530

Module for DHW management



Installation example

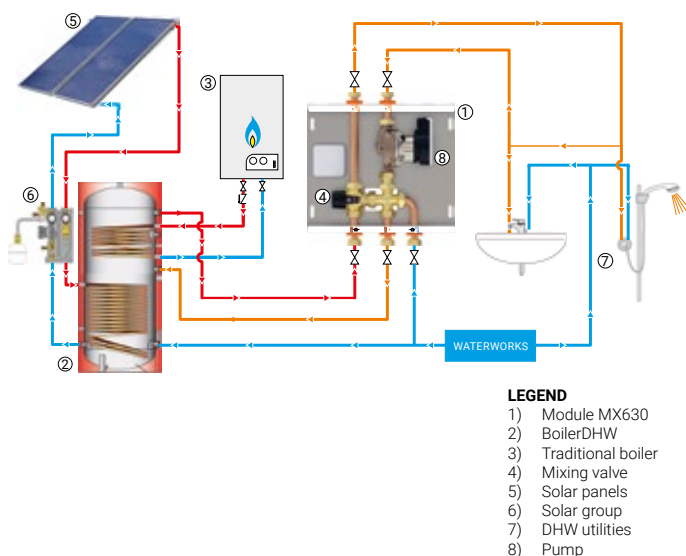


MX630

Module for DHW management

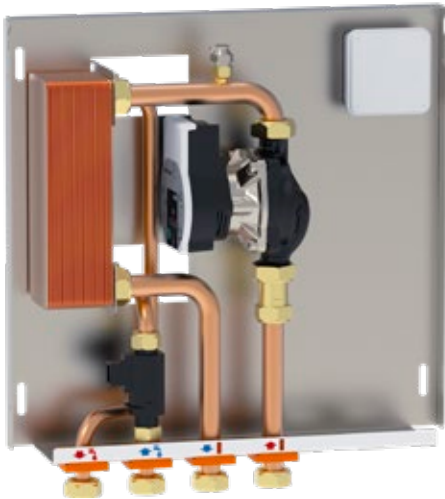


Installation example



MX125/ACS

Module for instantaneous DHW production



MX150/ACS

Module for instantaneous DHW production

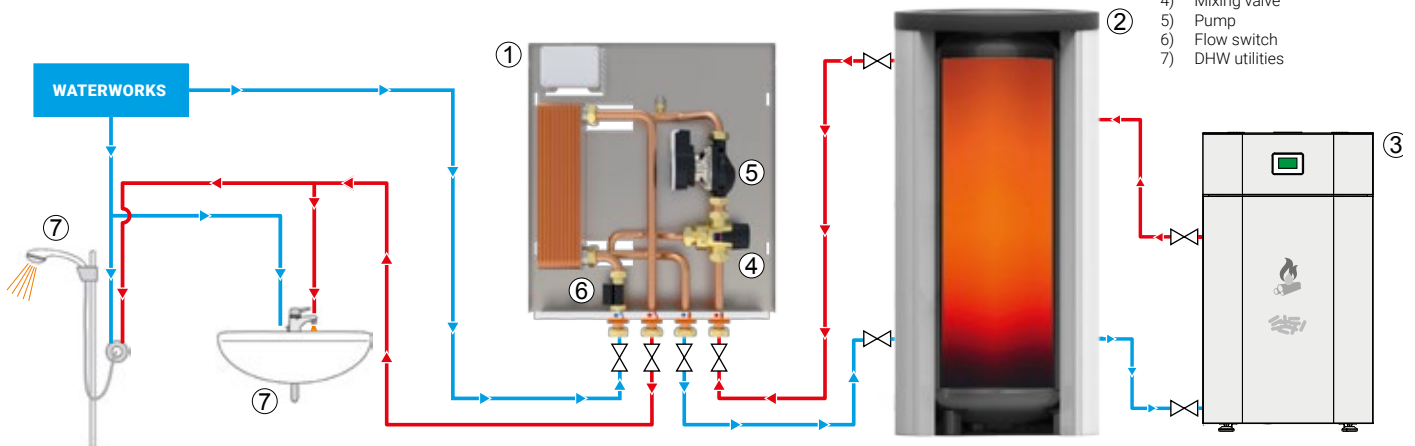


Installation example

MX150/ACS

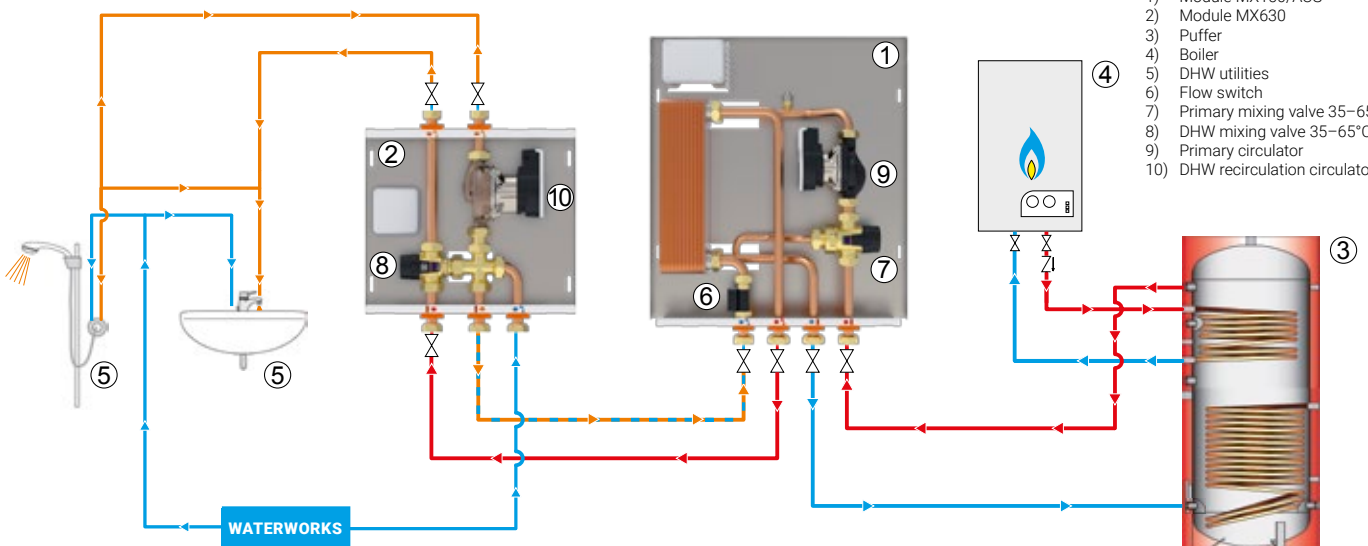
LEGEND

- 1) Module MX150/ACS
- 2) Puffer
- 3) Boiler
- 4) Mixing valve
- 5) Pump
- 6) Flow switch
- 7) DHW utilities



LEGEND

- 1) Module MX150/ACS
- 2) Module MX630
- 3) Puffer
- 4) Boiler
- 5) DHW utilities
- 6) Flow switch
- 7) Primary mixing valve 35–65°C
- 8) DHW mixing valve 35–65°C
- 9) Primary circulator
- 10) DHW recirculation circulator





MAXIFLAME® by TECNO SALES AGENCY srl

Via Linguetta, 10/C - 60027 - Osimo (AN) ITALY | Tel. +39 071 7223426

www.maxiflame.it | info@maxiflame.it | info@tecnosalesagency.it