

GBE 220H-40 (E3,E4) / 16BAR | BPHE

OPZIONI E ACCESSORI

All prices shall be deemed to be indicative unless otherwise stated. Subject to modifications.

We cannot take any longer the responsibility for delay in delivery due to shortage in raw material or sub supplies. As a consequence thereof the mentioned delivery dates only have an indicative character and are non binding.

Any data or other information in this selection software shall be deemed to be a general description of product properties and shall not be binding upon Kelvion. Binding product specifications may be agreed by Kelvion in bids, proposals, tenders or other offers issued in response to inquiries or calls for tenders or other invitations to bid.

(*) In addition to the sales price stated in the order confirmation, the material surcharge (MS) valid on the confirmed delivery date will be charged upon delivery. The current material surcharge (MS) can be found under the following link <http://pages.kelvion.com/material-surcharge-brazed-phe/>.

THERMAL DATA

	LATO CALDO	LATO FREDDO	
Fluido	Acqua (liquido)	Acqua (liquido)	
Potenza Termica Scambiata		98,0	kW
Portata massica	2810	2411	kg/h
Portata Volumetrica	2,858	2,42	m ³ /h
Temperatura di ingresso	75,0	10,0	°C
Temperatura di uscita	45,0	45,0	°C
Perdite di carico	96,3	57,0	mbar
Volume	0,874	0,92	l
Pressione in ingresso	5,00	5,00	bar (g)

VELOCITIES (HOT)

v con in	1,93 m/s
v con out	1,89 m/s
v dist in	2,11 m/s
v dist out	2,07 m/s
v gap in	0,26 m/s

PRESSURE DROPS (HOT)

dp total	96,3 mbar
dp fr dist in	5,3 mbar
dp fr gap	85,8 mbar
dp fr dist out	5,2 mbar
dp dist	10,4 mbar

HEAT TRANSFER (HOT)

Reynolds	2.203,84
TWall max	35,6 °C
TWall min	75,0 °C

VELOCITIES (COLD)

v con in	1,61 m/s
v con out	1,64 m/s
v dist in	1,76 m/s
v dist out	1,79 m/s
v gap in	0,21 m/s

PRESSURE DROPS (COLD)

dp total	57,0 mbar
dp fr dist in	3,8 mbar
dp fr gap	49,3 mbar
dp fr dist out	3,9 mbar
dp dist	7,7 mbar

HEAT TRANSFER (COLD)

Reynolds	994,68
TWall max	56,0 °C
TWall min	10,0 °C

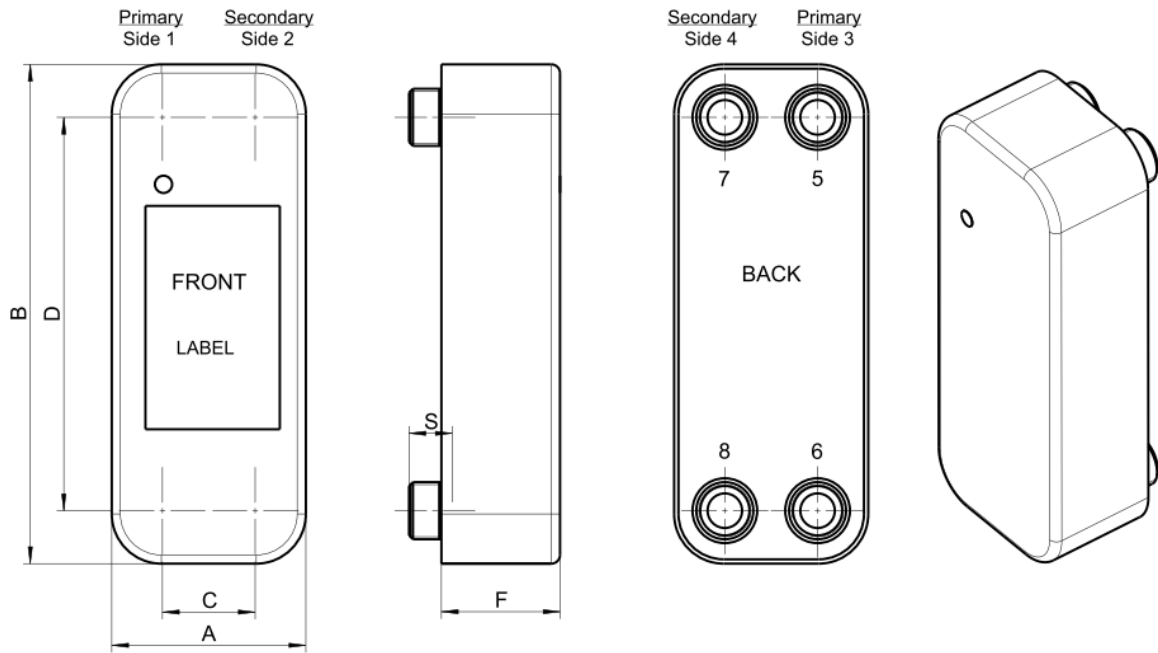
FLUID PROPERTIES

	LATO CALDO	LATO FREDDO	
Densità	983,16	996,33	kg/m ³
Capacità termica	4185	4181	J/kgK
Conduktività termica	0,651	0,6105	W/mK
Viscosità In	0,377	1,306	cP
Viscosità Out	0,596	0,596	cP

UNIT DATA

	LATO CALDO	LATO FREDDO	
Area di scambio	0,99		m ²
Numero di piastre (total / per unit)	40 / 40		
Margine di superficie	92,69		%
Materiale piastre	AISI316L		
Soldering material	Copper		
Tipologia di flusso	controcorrente		
Configurazione (passaggi x canali)	1 x 19	1 x 20	
N. unità (par. / ser. / total):	1 / 1 / 1		
Material Front- and endplate	AISI304		
LMTD	32,4		K
Design code	PED BPHE Standard		

DIMENSIONI



A: 90 mm
B: 328 mm

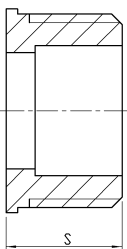
C: 43 mm
D: 279 mm

F: 102 mm
S: see connections

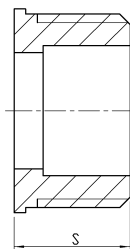
Net weight : 5 kg
Total weight : 6 kg

CONNECTIONS

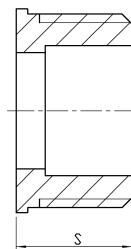
SIDE/FLOW	POS.	SIZE	TYPE	NAME	MEDIA	S
Hot in	5	G1	filett. est. DINISO228-1 G1 AISI304 0.020	E	Acqua (liquido)	12 mm
Hot out	6	G1	filett. est. DINISO228-1 G1 AISI304 0.020	E	Acqua (liquido)	12 mm
Cold in	8	G1	filett. est. DINISO228-1 G1 AISI304 0.020	E	Acqua (liquido)	12 mm
Cold out	7	G1	filett. est. DINISO228-1 G1 AISI304 0.020	E	Acqua (liquido)	12 mm



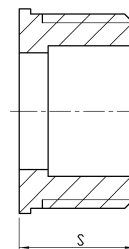
outside thread
DIN ISO 228-1



outside thread
DIN ISO 228-1



outside thread
DIN ISO 228-1



outside thread
DIN ISO 228-1

Please check physical properties.

Dimensional values provided from Kelvion Select PHE are to be used for reference only. For exact values, please contact your Kelvion Representative. Kelvion reserves the right to change specifications without prior notification.

Kelvion Select PHE software and the generated calculations provided herein are provided "as is" and any express or implied warranties, including, but not limited to, the implied warranties of merchantability and fitness for a particular purpose are disclaimed.

Kelvion does not guarantee compatibility of heat exchanger materials with process fluids / gases

In no event shall Kelvion be liable for any direct, indirect, incidental, special, exemplary, or consequential damages (including, but not limited to, procurement of substitute goods or services; loss of use, data, or profits; or business interruption) however caused and on any theory of liability, whether in contract, strict liability, or tort (including negligence or otherwise) arising in any way out of the use of Kelvion Select PHE Software, even if advised of the possibility of such damage.

Special requirements such as special documentation, calculations, coating, approvals, and accessories are not included within the scope of the offer price. If required, additional price can be discussed with your Kelvion Representative.

KELVION CODE: GBE 220H-40 (E3,E4) / 16BAR

You can return to your current configuration with the following link:

<https://selectphe.kelvion.com/code/401fb07e-41a0-443c-ac3d-7e62d69>

Creation date: Mar 11, 2026

Version: 26.0311.1131

Software version: master (MyPWT 57.1.230)