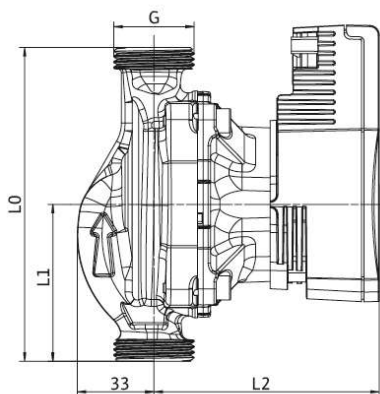
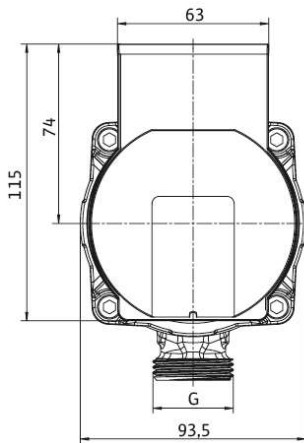
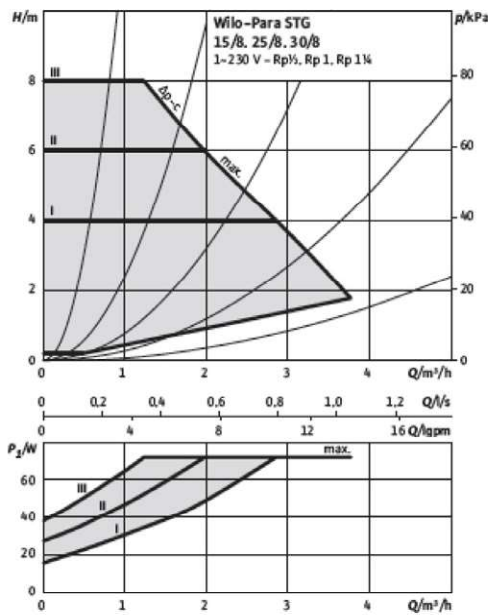


## PARA STG 15/8 - 25/8

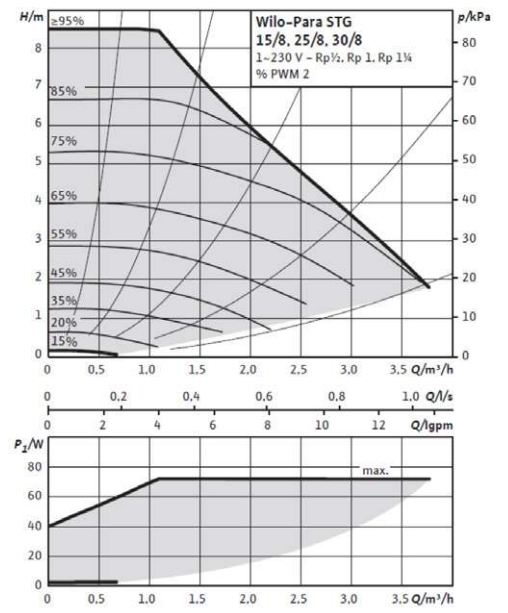
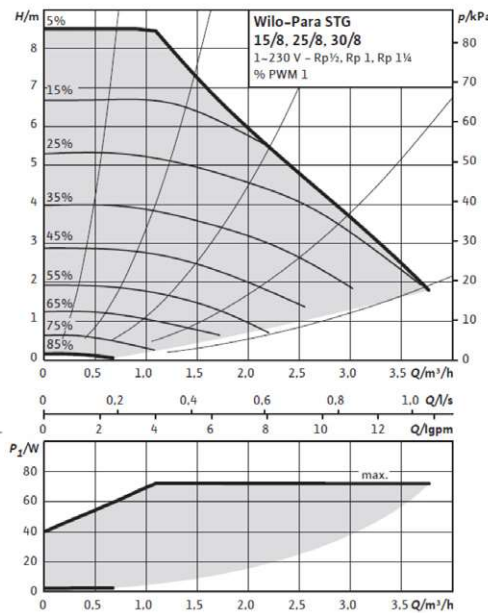
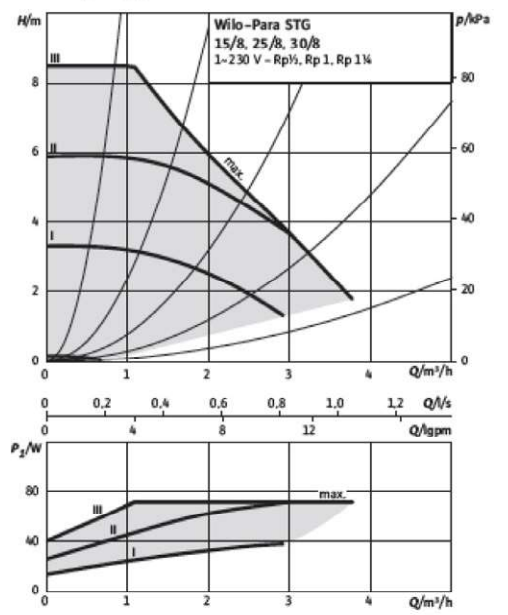
Para	Prevalenza max.	Portata max.	Velocità	Consumo 1-230 V	Corrente 1-230 V	Protezione motore
-	-	-	n	P1	I	-
	mt	m <sup>3</sup> /h	rpm	W	A	-
STG 15-25/8	8,4	4,0	500 - 4800	10-75	0,03-0,066	Integrata



Δp-c (constant)



Constant speed I, II, III



Codice	Descrizione	G	L0	L1	L2	Peso
101040	Para STG 15/8-70-130-12	1"	130 mm	65 mm	105 mm	Kg 1,7
101041	Para STG 25/8-70-130-12	1" ½	130 mm	65 mm	105 mm	Kg 1,8
101042	Para STG 25/8-70-180-12	1" ½	180 mm	90 mm	105 mm	Kg 2,0