

Pioneering for You

HVAC OEM Competence Centre

Yonos PARA High Flow 25(30)/10 Datasheet



ErP
READY

APPLIES TO
EUROPEAN
DIRECTIVE
FOR ENERGY
RELATED
PRODUCTS

Yonos PARA High Flow 25(30)/10



Field of application

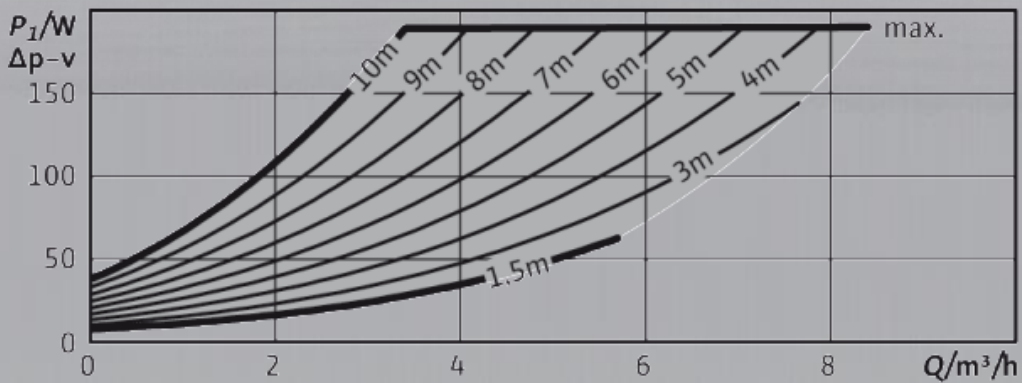
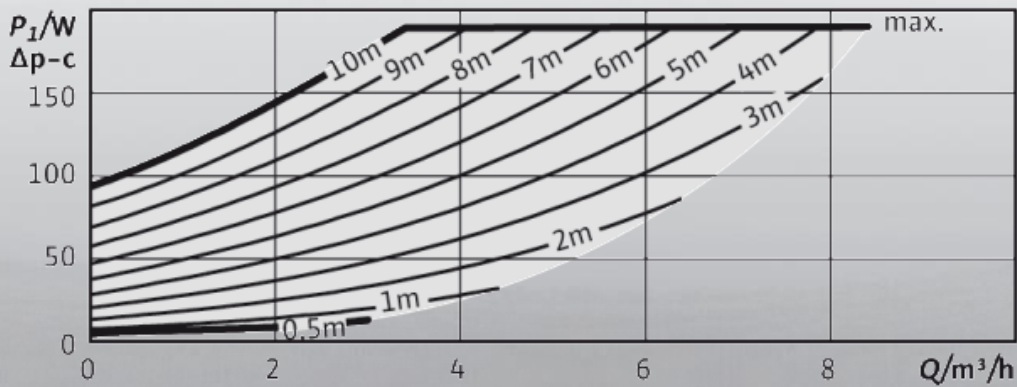
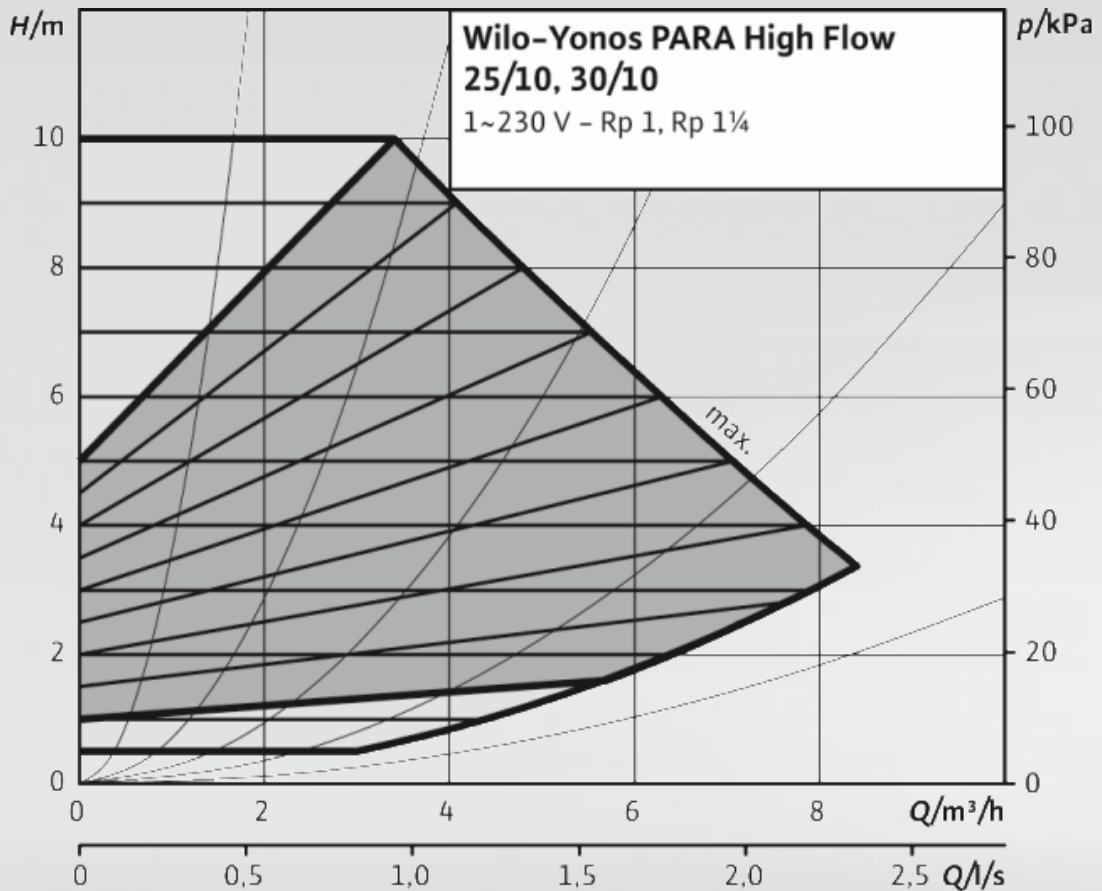
Hot-water heating systems of all kinds, air-conditioning systems, closed cooling circuits, industrial circulation systems.

Yonos PARA High Flow 25(30)/10

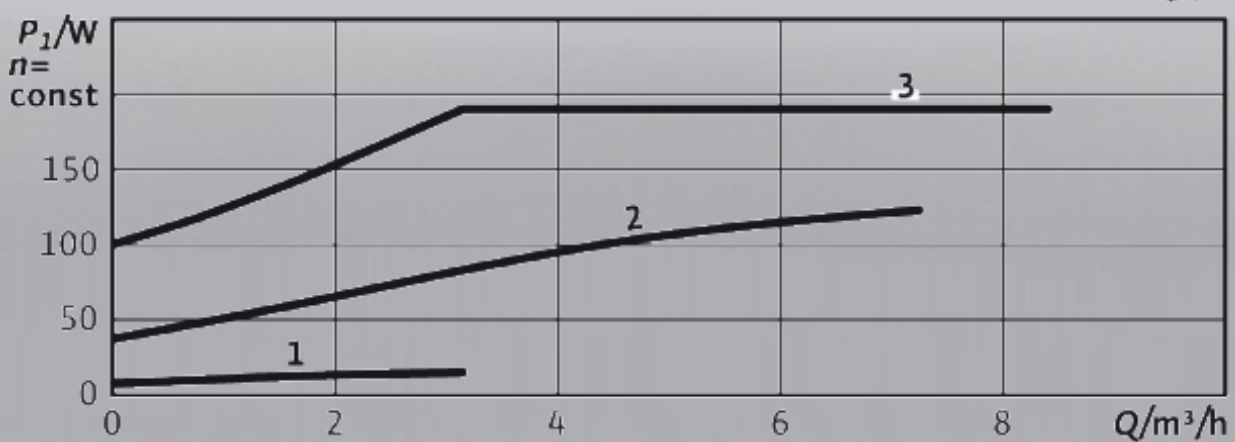
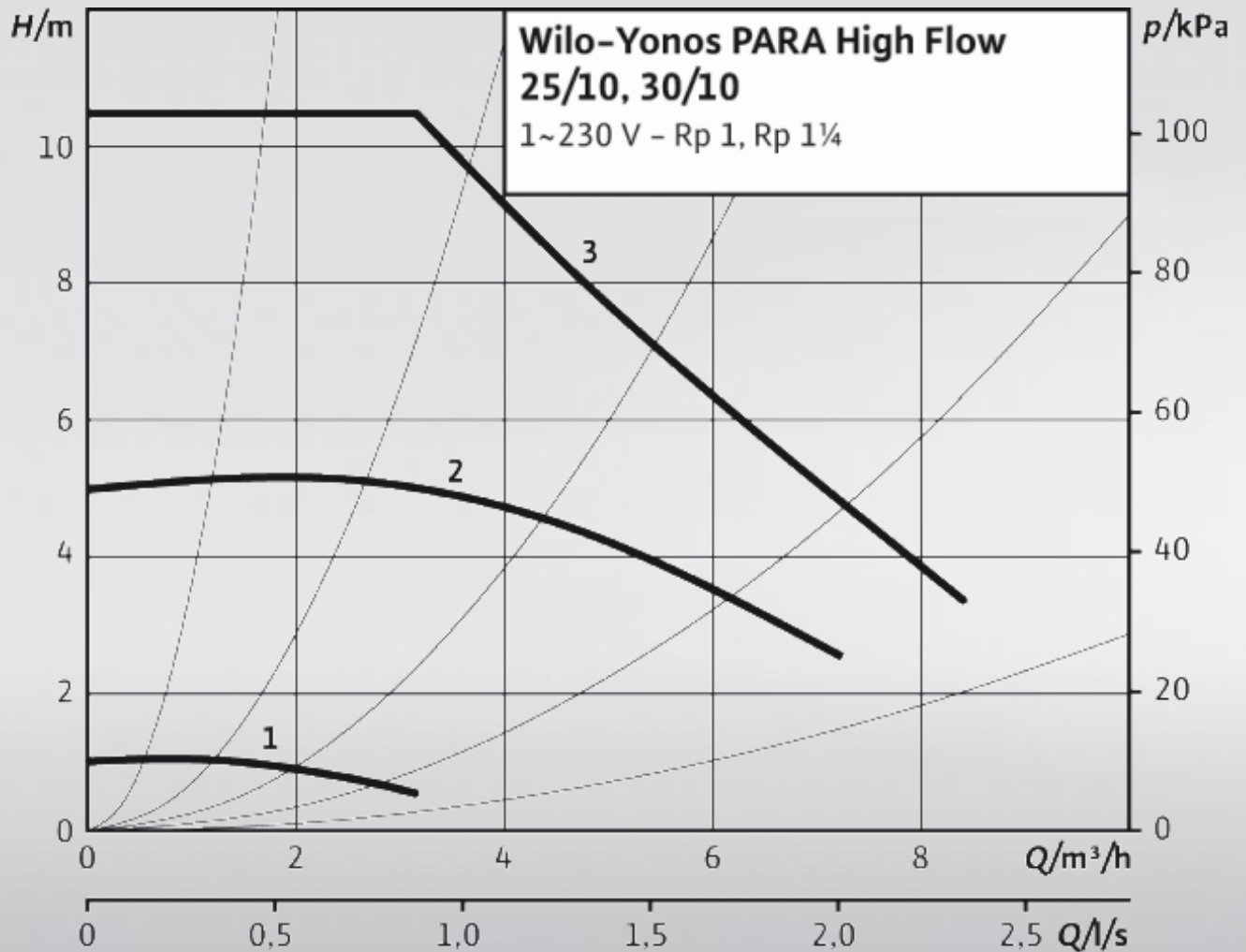
Yonos PARA High Flow **Electronically controlled High Efficiency pump**

25(30)	Nominal flange connection DN 25 (DN30)
140	Rated power P_2 [W]
4	Weight approx. [kg]

Hydraulic operational area $\Delta p-v$ / $\Delta p-c$ / constant speed

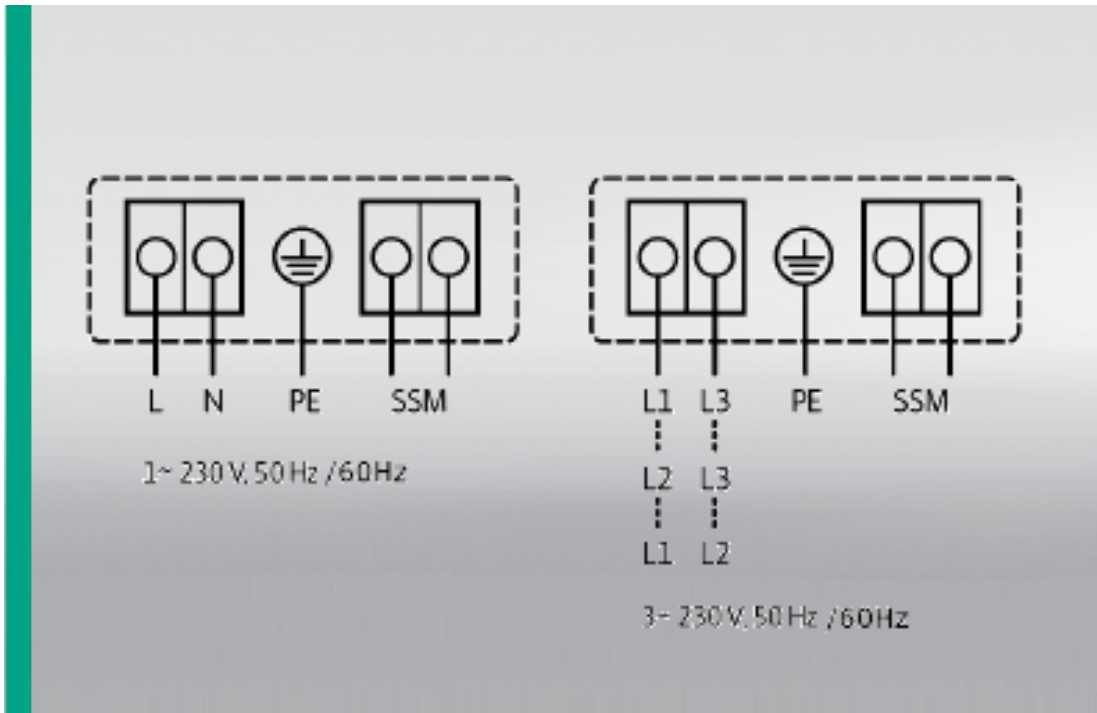


Hydraulic operational area Δp -v / Δp -c / constant speed

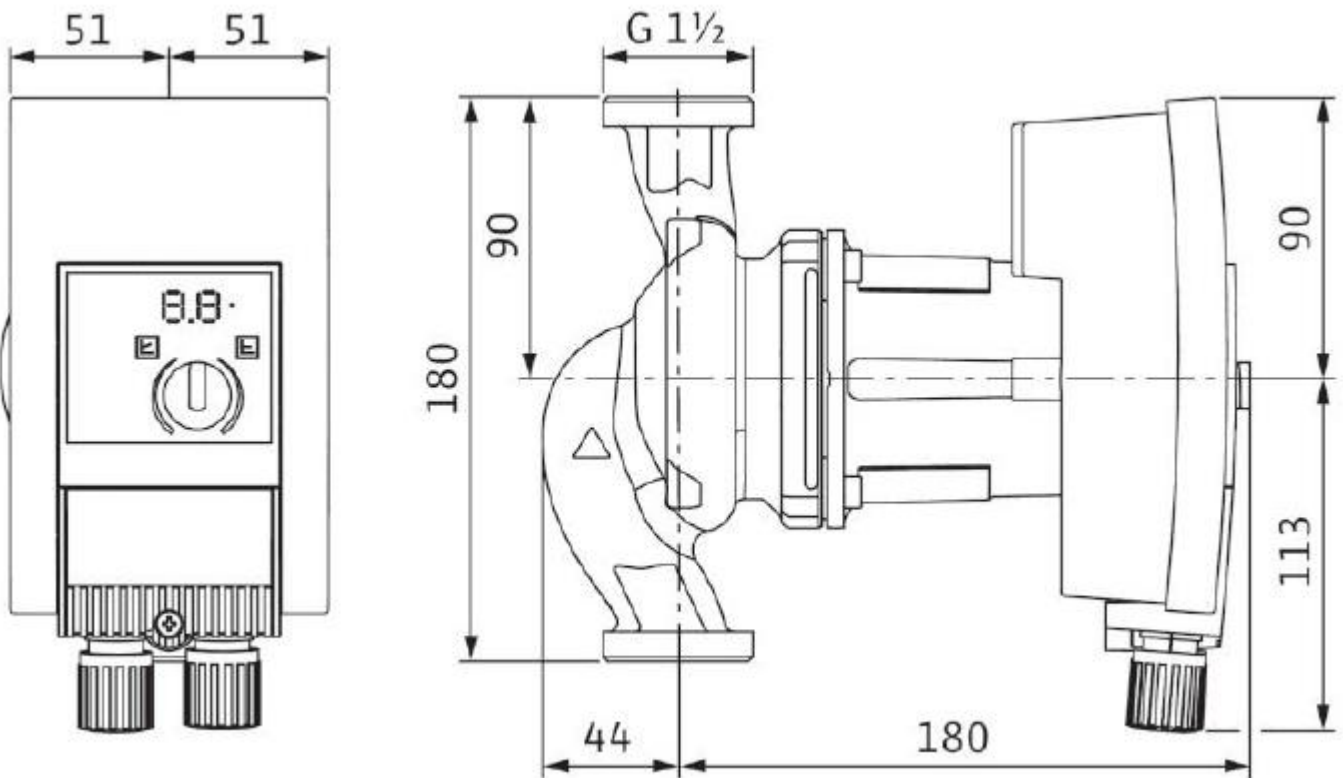


Electrical connections

wilo



Dimensions



Approved fluids (other fluids on request)	Heating water (in accordance with VDI 2035) Water-glycol mixtures (max. 1:1; above 20% admixture, the pumping data must be checked)
--	--

Power

Energy Efficiency Index (EEI)	≤ 0,20
Max. delivery head	10 m
Max. volume flow	8,5 m³/h

Permitted field of application

Temperature range for applications in HVAC systems at max. ambient temperature. Limit values for continuous operation at maximum rated power	Fluid temperature -20°C to +110°C Ambient temperature -20°C to +40°C The pump is controlled by a power-limiting function that protects against overload.
Maximum static pressure	PN 10

Electrical connection

Mains connection	1-230V ± 10%, 50/60Hz, in accordance with DIN IEC 60038 3-230V ± 10%, 50/60Hz, in accordance with DIN IEC 60038
------------------	--

Motor/electronics

EC Machinery directive	2006/42/EG Conform
Electromagnetic compatibility	Directive 2004/108/EG
Emitted interference	EN 61000-6-3
Interference resistance	EN 61000-6-2
Protection class	IPx4D
Insulation class	F
RoHS / REACH	Not submitted

Minimum suction head at suction port to avoid cavitation at water pumping temperature

Minimum suction head at 50/95/110°C	3 / 10 / 16 m
-------------------------------------	---------------

Motor data

Yonos PARA High Flow	Speed	Power consumption 1-230 V	Current at 1-230 V	Motor protection
	n	P1	I	-
	rpm	W	A	-
25(30)/10	1000 - 4450	5 – 190	0.08 – 1,3	Integrated

Materials

Yonos PARA High Flow	Pump housing	Impeller	Pump shaft	Bearing
25(30)/10	Grey cast iron (EN-GJL-200)	PPS composite with GF 30%	Stainless steel (X30Cr13)	Carbon, metal impregnated



Pioneering for You

WILO SE
HVAC OEM Competence Centre

50 Avenue Eugene Casella
18700 Aubigny-sur-Nère
France

T +33 2 48 81 62 62
information@wilo-oem.com
www.wilo-oem.com

Follow us on

